

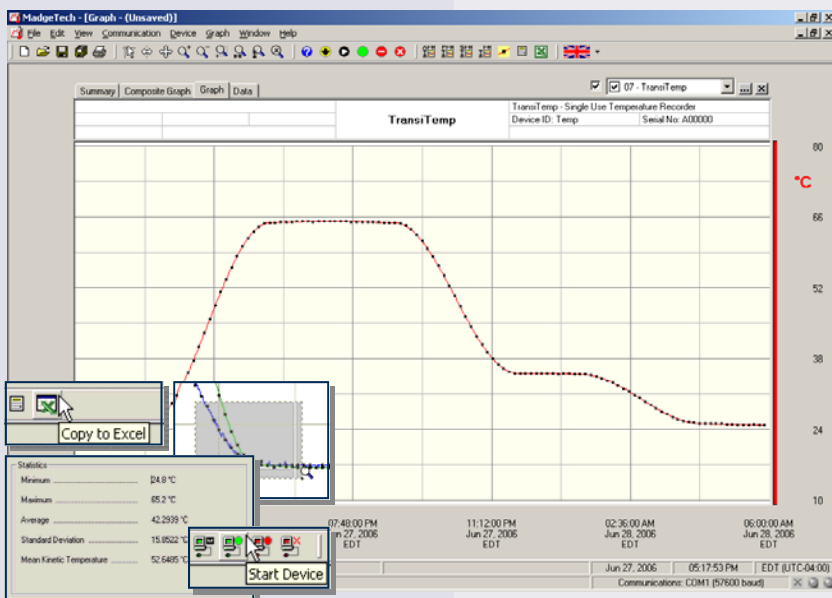
### Features

- Single/Multi-Use
- Low cost
- Unparalleled quality & performance
- User-friendly
- Convenient size
- Push button start
- User selectable reading rate
- Wide temperature range
- Programmable alarm
- Instantaneous out of range indication
- CE compliant

### Applications

- Implement HACCP programs
- Cold chain monitoring
- Verify products are stored and shipped at safe temperatures
- Monitor refrigerated cars
- Medical and Pharmaceutical shipment verification
- Replace costly strip chart recorders

The TransiTemp is a low cost temperature recorder designed to allow the user to easily monitor temperature fluctuations over time during shipment or storage of goods. This all-in-one, compact, portable, easy to use device will measure and record up to 8,191 measurements. The storage medium is non-volatile solid state memory, providing maximum data security even if the battery becomes discharged. The device can be started by holding down a recessed push button. Once started a green LED indicator light will blink once per second for 30 seconds to indicate that the device is active. A second red LED indicator will blink at 3 second intervals if the temperature goes above or below the selected alarm settings. The TransiTemp makes data retrieval quick and easy. Simply plug it in to an empty COM or USB port and our user-friendly software will do the rest.



**MadgeTech Data Recorder Software** displays temperature data in an easy to use graph.

The Windows®-based software package allows the user to effortlessly collect, display and analyze data. A variety of powerful tools allow you to examine, export, and print professional looking data with just a click of the mouse.

Click [MadgeTech Software](#) for more information or to download the software.

## TRANSITEMP SPECIFICATIONS\*

<b>Temperature Sensor:</b> Semiconductor	<b>Temperature Alarm:</b> Programmable temperature alarm with high and low limits selectable in software; When logged data reaches or exceeds either limit, red LED blinks every three seconds
<b>Temperature Range:</b> -20 to +70°C	<b>Activity Indicator:</b> Green LED blinks every 15 seconds to indicate device has been started
<b>Temperature Resolution:</b> 0.1°C	<b>Battery Type:</b> 3V lithium coin cell included, 2 year shelf life, <b>user replaceable</b>
<b>Accuracy:</b> ±0.5°C (-10 to +40°C) ±1.0°C (-20 to +70°C)	<b>Battery Life:</b> 90-120 days typical at 25°C, 5 minute reading rate
<b>Usage:</b> Single/Multi-Use	<b>Computer Interface:</b> PC serial or USB (interface cable required); 38,400 baud
<b>Memory:</b> 8,191 readings (>85 days at 1 reading/15 minutes)	<b>Software:</b> XP SP3/Vista/Windows 7
<b>Reading Rate:</b> 1 reading every 5 sec. to 1 every 30 minutes, selectable in software	<b>Operating Environment:</b> -20 to +70°C, 0 to 90%RH non-condensing
<b>Start Modes:</b> Pushbutton start, or software programmable immediate start or delay start up to 30 days in advance.	<b>Dimensions:</b> 1.9" x 3.6" x 0.7" (49mm x 92mm x 18mm)
<b>Data Format:</b> Date and time stamped °C, °F	<b>Weight:</b> 1.4 oz. (40 g)
<b>Time Accuracy:</b> ±2 minute/month at 25°C	<b>Approvals:</b> CE

**BATTERY WARNING:** FIRE, EXPLOSION, BURN HAZARD. DO NOT OPEN BATTERY, DISPOSE IN FIRE, HEAT ABOVE 100°C (212°F), EXPOSE CONTENTS TO WATER, RECHARGE, PUT IN BACKWARDS, MIX WITH USED OR OTHER BATTERY TYPES. MAY EXPLODE OR LEAK AND CAUSE PERSONAL INJURY.

## SOFTWARE FEATURES

<b>Multiple Graphs:</b> Simultaneously analyze data from several units or deployments; easily switch to a single data series	<b>Statistics:</b> Calculate averages, min, max, standard deviation, and mean kinetic temperature with the touch of a button
<b>Real-Time Recording:</b> Collect and display data in real-time while continuing to log	<b>Export Data:</b> Export data in a variety of common formats, or switch to Excel® with a single click
<b>Graphical Cursor:</b> One click displays readings by time, value, parameter or sample number	<b>Calibration:</b> Automatically calculate and store calibration parameters
<b>Data Table:</b> Instantly access tabular view for detailed dates, times, values, and annotations	<b>Logger Configuration:</b> Easy set up and launch of data loggers with immediate or delayed start, preferred sample rate, and device ID
<b>Scaling Options:</b> Autoscale function fits data to the screen, or allows user to manually enter their own values	<b>Communications:</b> Automatically sets up communications port, or lets user select configuration
<b>Formatting Options:</b> Change colors, line styles, plotting options, show or hide channels quickly	<b>Printing:</b> Automatically print graphical or tabular data

\*SPECIFICATIONS ARE SUBJECT TO CHANGE WITHOUT NOTICE. SPECIFIC WARRANTY AND REMEDY LIMITATIONS APPLY. CALL 1-603-456-2011 OR GO TO WWW.MADGETECH.COM FOR DETAILS.

## ORDERING INFORMATION

Model	Description	Price (U.S.)
TRANSITEMP	Single-Use Temperature Recorder	\$23.50
TRANSITEMP-MULTI	Multi-Use Temperature Recorder	\$49.00
IFC110	Software, manual and RS232 interface cable	\$99.00
IFC200	Software, manual and USB interface cable	\$119.00
NIST	N.I.S.T. Calibration Certificate	Call for Pricing
CR2032	Replacement battery for TransiTemp-Multi	\$5.00

For Quantity Discounts call 603-456-2011 or email [sales@madgetech.com](mailto:sales@madgetech.com)

### ASK ABOUT OUR OTHER DATA RECORDERS

Temperature	Pulse/Event/State
Humidity	Low Level Current
Pressure	Low Level Voltage
pH	RF Transmitters
Level	Intrinsically Safe
Shock	Spectral Vibration
LCD Display	

