

Features

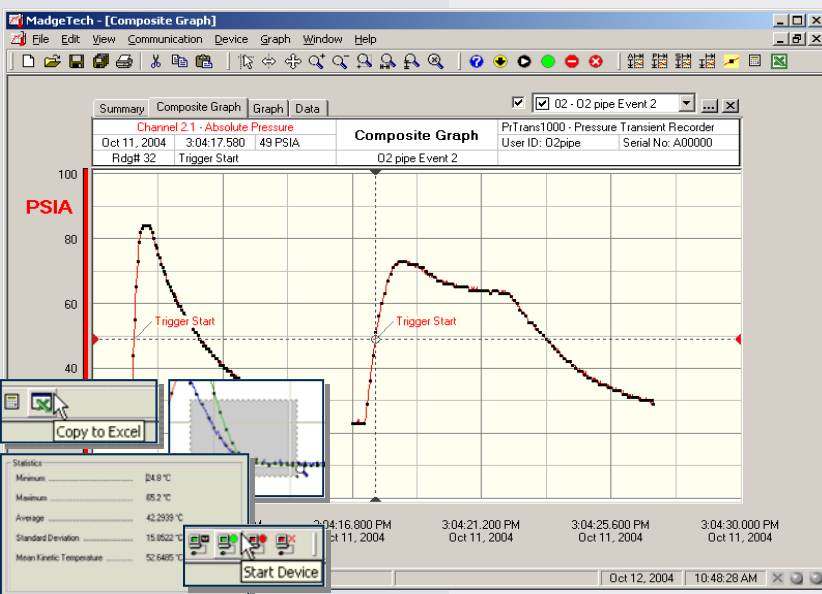
- Intrinsically safe
- Rugged
- 100 Hz operation
- Software selectable trigger modes and threshold levels
- Programmable start time
- Real-time operation
- 1/4" NPT pressure port



Applications

- Oil and gas applications
- Water hammer
- Compressors
- Pumps
- Pneumatics
- Process control systems
- Lubrication systems
- Chemical processing
- Pulp and paper processing
- Waste water treatment
- HVAC

It is an all too common paradox: you need to capture transient events at a high sample rate but the events of interest are erratically spread over a long period of time. The PRTrans1000IS is the pressure recorder to solve your problems. It samples up to 100Hz (10ms) but it will only trigger on pressure limits that you set beforehand. You can start the trigger on high and/or low thresholds and end the trigger after either a chosen number of samples, or when the signal crosses over your stop threshold. The device can record up to 255 events and take as many as 262,143 pressure samples. The recorder also shows up to 32 samples of "pre-trigger" data so you might learn what caused the trigger in the first place. The PRTrans1000IS has been Factory Mutual certified as intrinsically safe for Class I, Division 1, groups A, B, C and D and non-incendive for Class I, Division 2, groups A, B, C and D. This certification makes the device ideal for uses in hostile environment applications. The PRTrans1000IS is a battery operated unit with a standard 1/4" NPT for easy coupling to your pressure systems. The non-volatile memory will retain your valuable data even if the user-replaceable battery becomes discharged. The PRTrans1000IS: your solution to the transient pressure problem.



MadgeTech Data Recorder Software

displays pressure data in an easy to use graph.

The Windows®-based software package allows the user to effortlessly collect, display and analyze data. A variety of powerful tools allow you to examine, export, and print professional looking data with just a click of the mouse.

Click [MadgeTech Software](#) for more information or to download the software.

PRTRANS1000IS SPECIFICATIONS*

| | |
|--|---|
| Pressure Sensor: Semiconductor strain gauge | Reading Rate: 1 reading every 10ms to 1 every second |
| Pressure Range: 0 to 30, 100, 300, 500 PSIA/G; 0 to 1000, 5000 PSIA | Calibration: Digital calibration through software |
| Pressure Resolution: 0.02, 0.1, 0.2, 0.5 PSIA/G; 1.0, 5.0PSIA | Calibration Date: Automatically recorded within device |
| Calibrated Accuracy: 2%FSR, .25% @ 25°C typical | Battery Type: 3.6V lithium battery included; user replaceable |
| Pressure Response Time: 0.1 ms (10 to 90%FSR) | Battery Life: 3 days continuous @ 10ms sample rate |
| Repeatability: ±0.5%FSR; ±0.2% typical | Shelf Life: Up to 1 year when device is not in use |
| Adaptor: 1/4" male NPT | Data Format: Date and time stamped PSIA(G), inches, feet, mmHg, bar, Torr, kPa |
| Trigger Modes: Software programmable window size or bi-level start/stop triggers. | Computer Interface: PC serial or USB (interface cable required); 115,200 baud |
| Start Modes: Software programmable immediate start or delay start up to seven days in advance | Software: XP SP3/Vista/Windows 7 |
| Real Time Recording: May be used with PC to monitor and record data in real time | Operating Environment: -40 to +80°C, 0 to 100%RH |
| Memory: 262,143 samples | Dimensions: 6.4" x 1.25" dia. (163mm x 32mm dia.) |
| Number of Events: Up to 255 triggered events | Weight: 12 oz (340 g) |
| Pre-trigger size: Up to 32 samples | Material: Stainless Steel |
| | Approvals: CE, FM Certified Intrinsically Safe for Class I, Division 1 groups A, B, C and D |

BATTERY WARNING: RISK OF FIRE OR EXPLOSION. DO NOT RECHARGE,
FORCE OPEN, HEAT OR DISPOSE OF IN FIRE.

SOFTWARE FEATURES

| | |
|--|---|
| Multiple Graphs: Simultaneously analyze data from several units or deployments; easily switch to a single data series | Statistics: Calculate averages, min, max, standard deviation, and mean kinetic temperature with the touch of a button |
| Graphical Cursor: One click displays readings by time, value, parameter or sample number | Export Data: Export data in a variety of common formats, or switch to Excel® with a single click |
| Data Table: Instantly access tabular view for detailed dates, times, values, and annotations | Calibration: Automatically calculate and store calibration parameters |
| Scaling Options: Autoscale function fits data to the screen, or allows user to manually enter their own values | Logger Configuration: Easy set up and launch of data loggers with immediate or delayed start, preferred sample rate, and device ID |
| Formatting Options: Change colors, line styles, plotting options, show or hide channels quickly | Communications: Automatically sets up communications port, or lets user select configuration |

*SPECIFICATIONS ARE SUBJECT TO CHANGE WITHOUT NOTICE.
SPECIFIC WARRANTY AND REMEDY LIMITATIONS APPLY.
CALL 1-603-456-2011 OR GO TO WWW.MADGETECH.COM FOR DETAILS.

ORDERING INFORMATION

| Model | Description | Price (U.S.) |
|--------------------|---|------------------|
| PRTRANS1000IS-30 | 0-30PSIA(G) Intrinsically Safe Pressure and Temperature Recorder | \$649.00 |
| PRTRANS1000IS-100 | 0-100PSIA(G) Intrinsically Safe Pressure and Temperature Recorder | \$649.00 |
| PRTRANS1000IS-300 | 0-300PSIA(G) Intrinsically Safe Pressure and Temperature Recorder | \$649.00 |
| PRTRANS1000IS-500 | 0-500PSIA(G) Intrinsically Safe Pressure and Temperature Recorder | \$649.00 |
| PRTRANS1000IS-1000 | 0-1000PSIA Intrinsically Safe Pressure and Temperature Recorder | \$649.00 |
| PRTRANS1000IS-5000 | 0-5000PSIA Intrinsically Safe Pressure and Temperature Recorder | \$649.00 |
| IFC110 | Software, manual and RS232 interface cable | \$ 99.00 |
| IFC200 | Software, manual and USB interface cable | \$119.00 |
| NIST | N.I.S.T. Calibration Certificate | Call for Pricing |
| TL-2150 | Replacement battery for PRTrans1000IS | \$ 15.00 |

ASK ABOUT OUR OTHER DATA RECORDERS

| | |
|-------------|--------------------|
| Temperature | Pulse/Event/State |
| Humidity | Low Level Current |
| Pressure | Low Level Voltage |
| pH | RF Transmitters |
| Level | Intrinsically Safe |
| Shock | Spectral Vibration |
| LCD Display | |

For Quantity Discounts call 603-456-2011 or email sales@madgetech.com



DOC-1123009-00 REV F 2010.06.28