

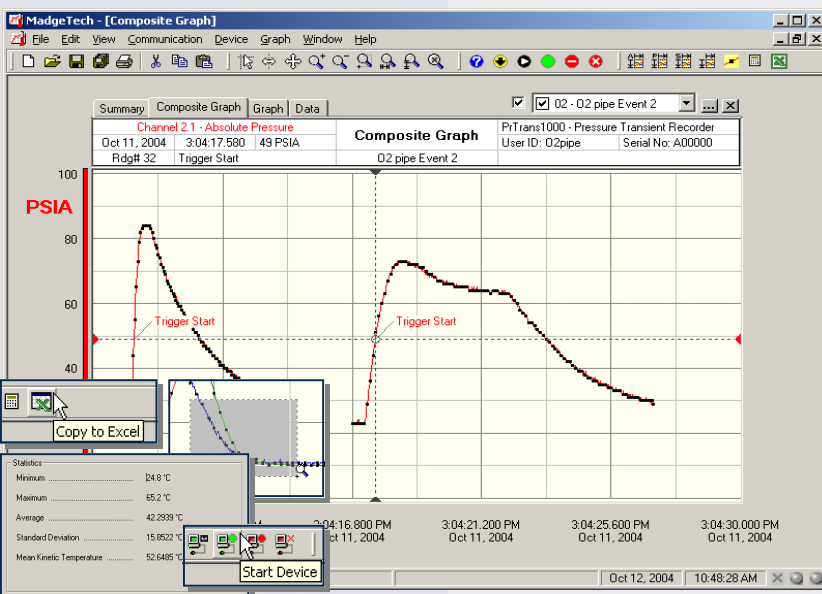
### Features

- 100 Hz operation
- Software selectable trigger modes and threshold levels
- Rugged
- Reusable
- Submersible
- Programmable start time
- 32 sample pre-trigger buffer
- 1/4" NPT pressure port

### Applications

- Water hammer
- Compressors
- Pumps
- Pneumatics/hydraulics
- Process control systems
- Lubrication systems
- Chemical processing
- Pressure reducing valves
- Waste water treatment
- HVAC

It is an all too common paradox: you need to capture transient events at a high sample rate but the events of interest are erratically spread over a long period of time. The PRTrans1000 is the pressure recorder to solve your problems. It samples up to 100Hz (10ms) but it will only trigger on pressure limits that you set beforehand. You can start the trigger on high and/or low thresholds and end the trigger after either a chosen number of samples, or when the signal crosses over your stop threshold. The device can record up to 255 events and take as many as 262,143 pressure samples. The recorder also shows up to 32 samples of "pre-trigger" data so you might learn what caused the trigger in the first place. The PRTrans1000 is a battery operated unit with a standard 1/4" NPT for easy coupling to your pressure systems. It is also completely submersible and the stainless steel sensor can measure the pressure of most common fluids and gasses. The non-volatile memory will retain your valuable data even if the user-replaceable battery becomes discharged. The PRTrans1000: your solution to the transient pressure problem.



**MadgeTech Data Recorder Software** displays pressure data in an easy to use graph.

The Windows®-based software package allows the user to effortlessly collect, display and analyze data. A variety of powerful tools allow you to examine, export, and print professional looking data with just a click of the mouse.

Click [MadgeTech Software](#) for more information or to download the software.

## PRTRANS1000 SPECIFICATIONS\*

<b>Pressure Sensor:</b> Semiconductor strain gauge	<b>Reading Interval:</b> 1 reading every 10ms to 1 every second
<b>Pressure Range:</b> 0 to 30, 100, 300, 500 PSIA/G; 1000, 5000 PSIA	<b>Calibration:</b> Digital calibration through software
<b>Pressure Resolution:</b> 0.02, 0.1, 0.2, 0.5 PSIA/G; 1.0, 5.0 PSIA	<b>Calibration Date:</b> Automatically recorded within device
<b>Calibrated Accuracy:</b> 2%FSR, 0.25% @ 25°C typical	<b>Battery Type:</b> 3.6V lithium battery included; <b>user replaceable</b>
<b>Pressure Response Time:</b> 0.1ms (10 to 90%FSR)	<b>Battery Life:</b> 3 days continuous @ 10ms sample rate
<b>Repeatability:</b> ±0.5%FSR; ±0.2% typical	<b>Shelf Life:</b> Up to 1 year when device is not in use
<b>Adaptor:</b> 1/4" male NPT or fully submersible	<b>Data Format:</b> Date and time stamped PSIA(G), inches, feet, mmHg, bar, Torr, kPa
<b>Trigger Modes:</b> Software programmable window size or bi-level start/stop triggers.	<b>Computer Interface:</b> PC serial or USB (interface cable required); 115,200 baud
<b>Start Modes:</b> Software programmable immediate start or delay start up to seven days in advance	<b>Software:</b> Windows 95/98/ME/NT/2000/XP/Vista based software
<b>Real Time Recording:</b> May be used with PC to monitor and record data in real time	<b>Operating Environment:</b> -40°C to +80°C, 0 to 100%RH
<b>Memory:</b> 262,143 samples	<b>Dimensions:</b> 6.4" x 1.25" dia. (163mm x 32mm dia.)
<b>Number of Events:</b> Up to 255 triggered events	<b>Weight:</b> 12 oz (340 g)
<b>Pre-trigger size:</b> Up to 32 samples	<b>Material:</b> Stainless Steel
	<b>Approvals:</b> CE

**BATTERY WARNING:** RISK OF FIRE OR EXPLOSION. DO NOT RECHARGE, FORCE OPEN, HEAT OR DISPOSE OF IN FIRE.

## SOFTWARE FEATURES

<b>Multiple Graphs:</b> Simultaneously analyze data from several units or deployments; easily switch to a single data series	<b>Statistics:</b> Calculate averages, min, max, standard deviation, and mean kinetic temperature with the touch of a button
<b>Graphical Cursor:</b> One click displays readings by time, value, parameter or sample number	<b>Export Data:</b> Export data in a variety of common formats, or switch to Excel® with a single click
<b>Data Table:</b> Instantly access tabular view for detailed dates, times, values, and annotations	<b>Calibration:</b> Automatically calculate and store calibration parameters
<b>Scaling Options:</b> Autoscale function fits data to the screen, or allows user to manually enter their own values	<b>Logger Configuration:</b> Easy set up and launch of data loggers with immediate or delayed start, preferred sample rate, and device ID
<b>Formatting Options:</b> Change colors, line styles, plotting options, show or hide channels quickly	<b>Communications:</b> Automatically sets up communications port, or lets user select configuration

\*SPECIFICATIONS ARE SUBJECT TO CHANGE WITHOUT NOTICE.  
SPECIFIC WARRANTY AND REMEDY LIMITATIONS APPLY.  
CALL 1-603-456-2011 OR GO TO WWW.MADGETECH.COM FOR DETAILS.

## ORDERING INFORMATION

Model	Description	Price (U.S.)
PRTRANS1000-30	0-30PSIA(G) Pressure Recorder	\$649.00
PRTRANS1000-100	0-100PSIA(G) Pressure Recorder	\$649.00
PRTRANS1000-300	0-300PSIA(G) Pressure Recorder	\$649.00
PRTRANS1000-500	0-500PSIA(G) Pressure Recorder	\$649.00
PRTRANS1000-1000	0-1000PSIA Pressure Recorder	\$649.00
PRTRANS1000-5000	0-5000PSIA Pressure Recorder	\$649.00
IFC110	Software, manual and RS232 interface cable	\$ 99.00
IFC200	Software, manual and USB interface cable	\$119.00
NIST	N.I.S.T. Calibration Certificate	Call for Pricing
TL-2150	Replacement battery for PRTrans1000	\$ 10.00

### ASK ABOUT OUR OTHER DATA RECORDERS

Temperature	Pulse/Event/State
Humidity	Low Level Current
Pressure	Low Level Voltage
pH	RF Transmitters
Level	Intrinsically Safe
Shock	Spectral Vibration
LCD Display	

For Quantity Discounts call 603-456-2011 or email [sales@madgetech.com](mailto:sales@madgetech.com)



DOC-1099009-00 REV D 2009.07.01