

PRTEMP1000D

DIFFERENTIAL PRESSURE, TEMPERATURE RECORDER

Features

- Rugged
- Reusable
- Submersible
- Programmable start time
- Real-time operation
- User-friendly
- Low cost

Applications

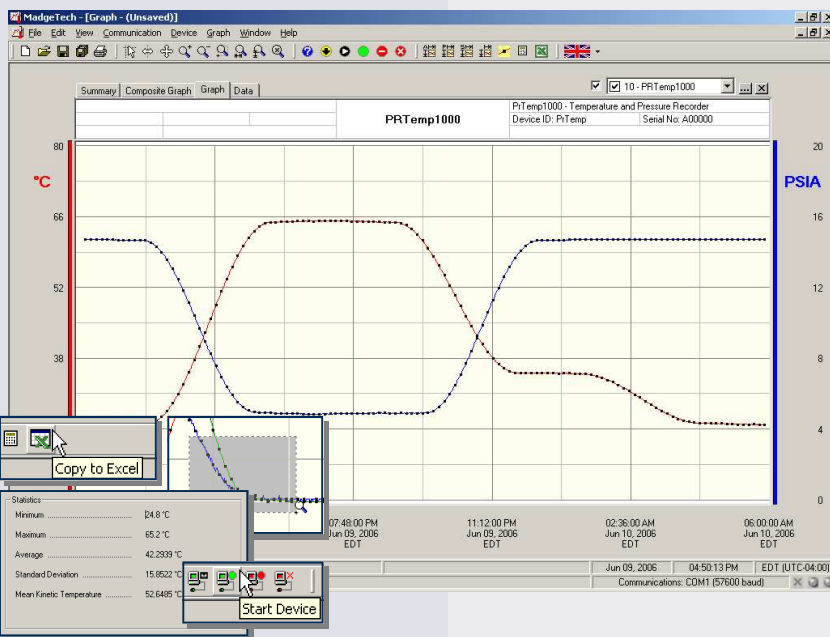
- Pneumatics
- Process control systems
- Gas compressors
- Natural gas production
- Lubrication systems
- Chemical processing
- Pulp and paper processing
- Medical instrumentation
- Environmental studies
- Waste water treatment
- HVAC
- Oil & gas industries

The PRTemp1000D is a rugged pressure recorder to accurately monitor and record pressure and temperature at user programmable reading intervals. The rugged stainless steel design allows for the device to be placed in harsh environments, which makes it well suited for use with air conditioning systems, chilled water, hot water, air, gas, oil and steam pressure systems.

The internal temperature sensor provides accurate temperature measurements without the need for a separate temperature recorder. The logger can be started to take measurements as often as every two seconds, up to one reading every twelve hours. It will store up to 16,383 readings in its non-volatile memory.

The PRTemp1000D uses a rugged stainless steel pressure strain gauge to accurately measure the pressure. The device comes standard with a 1/4" NPT differential fitting.

There are many different pressure ranges available to fit most any application.



MadgeTech Data Recorder Software

displays pressure and temperature data in an easy to use graph.

The Windows®-based software package allows the user to effortlessly collect, display and analyze data. A variety of powerful tools allow you to examine, export, and print professional looking data with just a click of the mouse.

Click [MadgeTech Software](#) for more information or to download the software.

PRTEMP1000D SPECIFICATIONS*

Temperature Sensor: Semiconductor	Memory: 16,383 readings per channel, 32,766 total readings
Temperature Range: -20 to +80°C	Reading Rate: 1 reading every 2 seconds to 1 every 12 hours
Temperature Resolution: 0.1°C	Calibration: Digital calibration through software
Calibrated Accuracy: ±0.5°C (over 0°C to 50°C)	Calibration Date: Automatically recorded within device
Pressure Sensor: Semiconductor strain gauge	Battery Type: 3.6V lithium battery included; user replaceable
Pressure Range: 0 to 30, 100, 300 and 500PSID;	Battery Life: 1 year typical
Pressure Resolution: 0.002, 0.005, 0.02, 0.05PSID;	Data Format: Date and time stamped °C, °F, K, °R ; PSID, inches, feet, mmHg, bar, Torr, kPa,
Calibrated Accuracy: ±0.25% FSR, 0.1% @ 25°C typical	Time Accuracy: ±1 minute/month (at 20°C, RS232 port not in use)
Pressure Response Time: 1 ms (10 to 90% FSR)	Computer Interface: PC serial or USB (interface cable required); 2,400 baud
Adaptor: 1/4" male NPT	Software: Windows 95/98/ME/NT/2000/XP/Vista based software
Start Modes: Software programmable immediate start or delay start up to six months in advance	Operating Environment: -20 to +80°C, 0 to 100%RH
Real Time Recording: May be used with PC to monitor and record data in real time	Dimensions: .99" H x 21.87"L x 3.35W (25 x 533 x85 mm)
	Weight: 15.5 oz (440 g)
	Material: Stainless Steel

BATTERY WARNING: RISK OF FIRE OR EXPLOSION. DO NOT RECHARGE, FORCE OPEN, HEAT OR DISPOSE OF IN FIRE.

SOFTWARE FEATURES

Multiple Graphs: Simultaneously analyze data from several units or deployments; easily switch to a single data series	Statistics: Calculate averages, min, max, standard deviation, and mean kinetic temperature with the touch of a button
Graphical Cursor: One click displays readings by time, value, parameter or sample number	Export Data: Export data in a variety of common formats, or switch to Excel® with a single click
Data Table: Instantly access tabular view for detailed dates, times, values, and annotations	Calibration: Automatically calculate and store calibration parameters
Scaling Options: Autoscale function fits data to the screen, or allows user to manually enter their own values	Logger Configuration: Easy set up and launch of data loggers with immediate or delayed start, preferred sample rate, and device ID
Formatting Options: Change colors, line styles, plotting options, show or hide channels quickly	Communications: Automatically sets up communications port, or lets user select configuration

*SPECIFICATIONS ARE SUBJECT TO CHANGE WITHOUT NOTICE. SPECIFIC WARRANTY AND REMEDY LIMITATIONS APPLY. CALL 1-603-456-2011 OR GO TO WWW.MADGETECH.COM FOR DETAILS.

ORDERING INFORMATION

Model	Description	Price (U.S.)
PRTEMP1000D-30	0-30PSIA(G) Pressure and Temperature Recorder	\$2299.00
PRTEMP1000D-100	0-100PSIA(G) Pressure and Temperature Recorder	\$2299.00
PRTEMP1000D-300	0-300PSIA(G) Pressure and Temperature Recorder	\$2299.00
PRTEMP1000D-500	0-500PSIA(G) Pressure and Temperature Recorder	\$2299.00
IFC110	Software, manual and RS232 interface cable	\$ 99.00
IFC200	Software, manual and USB interface cable	\$119.00
NIST	N.I.S.T. Calibration Certificate	Call for Pricing
TL-2150	Replacement battery for PRTemp1000D	\$ 10.00

ASK ABOUT OUR OTHER DATA RECORDERS

Temperature	Pulse/Event/State
Humidity	Low Level Current
Pressure	Low Level Voltage
pH	RF Transmitters
Level	Intrinsically Safe
Shock	Spectral Vibration
LCD Display	

For Quantity Discounts call 603-456-2011 or email sales@madgetech.com



DOC-2040009-00 REV C 2009.07.01

879 Maple Street · Contoocook, NH 03229
PO Box 50 · Warner, NH 03278 · Phone: (603) 456-2011 · Fax: (603) 456-2012