

QUICK INSTALLATION GUIDE

IFC 300/400/406 Data Logger Interface

For Windows XP SP3 or later



IFC406



IFC400



IFC300

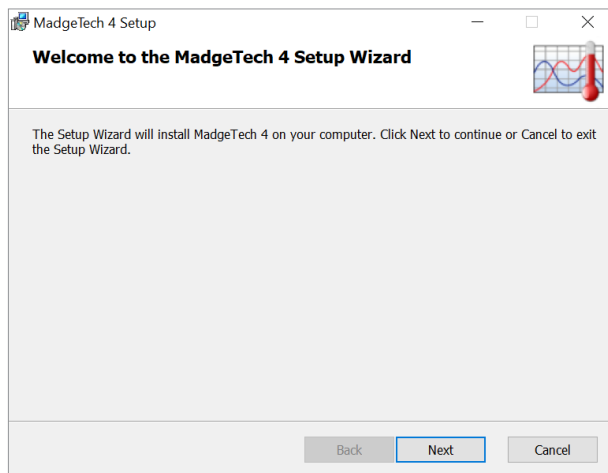
IMPORTANT: Do not connect the IFC to your PC until instructed to do so.

The IFC interface cable packages allow for the communication between stand alone data loggers and the MadgeTech 4 Software. Directly connect the IFC to a PC to start and stop the data logger or to download readings.

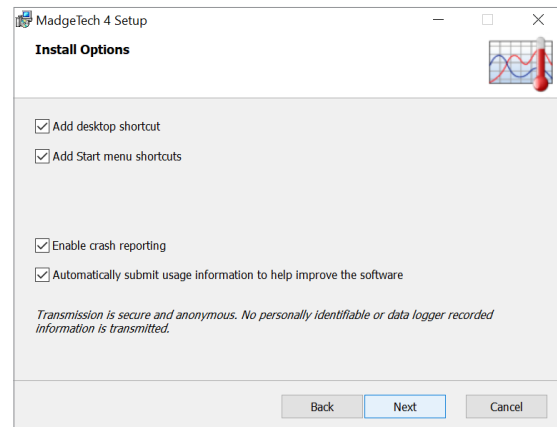
Installing the MadgeTech 4 Software

MadgeTech 4 Standard Software can be downloaded from the MadgeTech website (madgetech.com/software). See the MadgeTech 4 Software Manual for complete installation instructions.

1. Open the **MT4 folder** from the newly downloaded file and double click the **MTInstaller.exe** file to launch the Setup Wizard.
2. Select the Installer Language and click **OK**.
3. Accept the End-User License Agreement and click **Next**.



4. Choose the installation options and click **Next**.



5. MadgeTech 4 is now ready to install. Click **Install** to begin the installation.
6. Click Finish when the installation is complete.

The MadgeTech 4 Software requires the .NET Framework 4.0 to be installed on the PC. The Windows 8 and Windows 10 operating system comes with a newer version of the .NET Framework already installed. If the .NET Framework 4.0 has not been installed on the PC, download it from the Microsoft.com website.

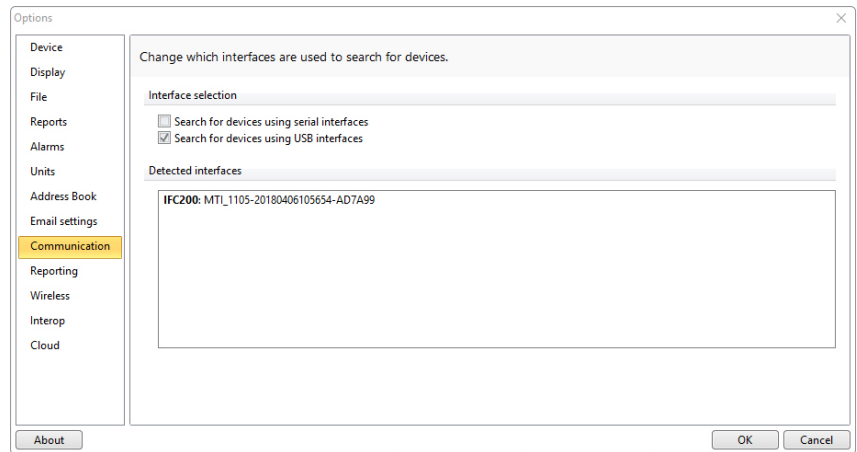
After the .NET Framework 4.0 installation has been confirmed, install the MadgeTech 4 Software following the steps above.

Installing USB Drivers

The USB interface drivers can easily be installed on the PC if they are not already available and running. They can be downloaded from the MadgeTech website (madgetech.com/software).

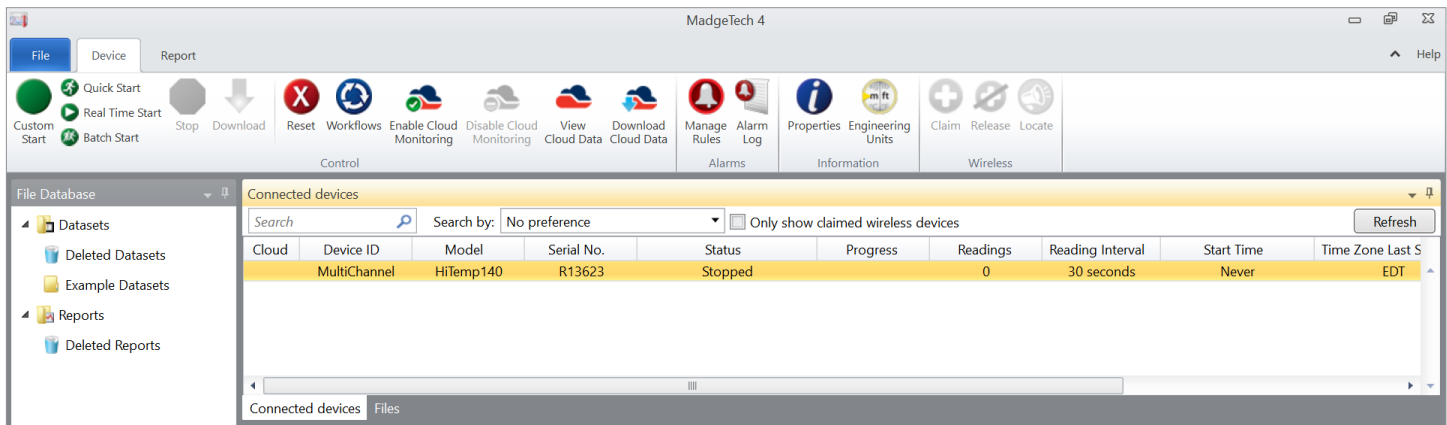
Connecting the IFC to MadgeTech 4 Software

1. Remove the Warning Label from the IFC to expose the USB port and connect the matching end of the USB cable.
2. Connect the other end of the USB cable to a USB port on the Windows PC. You will see a message indicating that a new USB device has been installed and is ready to use.
3. Verify the IFC has been installed correctly by launching the MadgeTech 4 Software and navigating to **File > Options > Communication**. You should see the IFC you installed listed on this screen.



Testing the Data Logger and Interface Connection

1. To verify that the Interface drivers are installed properly, start the MadgeTech 4 Software. (If necessary, see the software manual for additional instructions on the software.)
2. When the IFC is connected to the PC, the blue LED indicator light should be lit, if the drivers are properly installed and the interface is detected by Windows. If the indicator light is not on, unplug the interface cable and verify that the USB drivers have been installed. Wait 5 seconds and plug it back into the PC.
3. Place the data logger into the docking station or plug the data logger into the IFC.
4. Your device will appear in the Connected Devices panel.



Additional Information

For additional information or troubleshooting assistance, visit us online at [madgetech.com](https://www.madgetech.com), contact us at support@madgetech.com or call (603) 456-2011.