

# Wind101A

## Wind Speed Data Logger



The Wind101A is a complete system to accurately measure and record wind speed. This low cost wind speed recording system comes complete with a data logger, weather-proof enclosure, a three-cup anemometer and all the necessary cabling to quickly get up-and-running. The logger can record over 1,000,000 readings and the storage medium is non-volatile, solid state memory, providing maximum data security even if the battery becomes discharged. The device can be started and stopped directly from a computer using the MadgeTech Software.

### FEATURES

- Durable Housing for Logger
- 3-cup Anemometer
- 0 to 100 MPH (0 to 160KPH) Range
- 0.085 MPH Resolution at a 10 Second Sampling Rate
- $\pm 2.5\%$  Calibrated Accuracy over 10 to 100 MPH (16 to 160 KPH) Range
- 1 Second Reading Rate
- Multiple Start/Stop Function
- Ultra High Speed Download
- 1,047,552 Reading Storage Capacity
- Battery Life Indicator
- Optional Password Protection
- Field Upgradeable

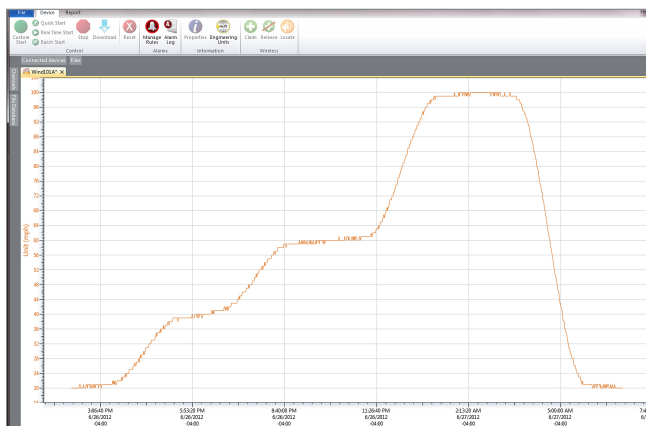
### BENEFITS

- Long-Term Field Deployment
- Simple Setup and Installation
- Minimal Long-Term Maintenance

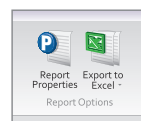
### APPLICATIONS

- Alternative Energy Studies
- Meteorology/Climatology
- Wind Turbine Location Assessments

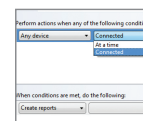
## MadgeTech 4 Software Features



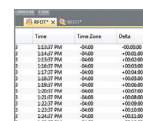
Graph View



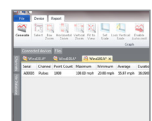
Export to Excel



Automation



Tabular Data View



Statistics

- Multiple graph overlay
- Statistics
- Digital calibration
- Zoom in/ zoom out
- Lethality equations (F0, PU)

- Mean Kinetic Temperature
- Full time zone support
- Data annotation
- Min./Max./Average lines
- Summary view

# Specifications

Specifications are subject to change without notice. Specific warranty remedy limitations apply.  
Call **(603) 456-2011** or go to **madgetech.com** for details.

MEASUREMENT	
Measurement Range	0 to 100 mph (0 to 45 m/s)
Resolution	0.085 mph at 10 second reading interval
Accuracy	±2.0 mph from 0 to 10 mph ±2.5% of reading from >10 to 100 mph
Starting Threshold	1.75 mph
Input Connection	6-position removable screw terminal

GENERAL	
Start Modes	Immediate start Delay start up to 18 months Multiple pushbutton start/stop
Stop Modes	Manual through software Timed (specific date and time)
Multiple Start/Stop Mode	Start and stop the device multiple times without having to download data or communicate with a PC
Real Time Recording	May be used with PC to monitor and record data in real time
Password Protection	An optional password may be programmed into the device to restrict access to configuration options. Data may be read out without the password
Memory	1,0475,520 readings; software configurable memory wrap 523,776 readings in multiple start/stop
Wrap Around	Yes
Engineering Units	See the Wind101A Product User Guide for instructions on how to program wind speed engineering units
LEDs	2 status LEDs

Reading Rate	1 reading every second up to 1 reading every 24 hours
Battery Type	3.6V lithium battery included; user replaceable
Battery Life	Dependent on frequency and duty cycle 10 months typical at 25 °C and 10 second reading rate
Time Accuracy	±1 minute/month at 25 °C (77 °F) (Stand alone mode)
Computer Interface	USB (interface cable required); 115,200 baud
Operating System Compatibility	Windows XP SP3 or later
Software Compatibility	Standard Software version 2.03.06 or later Secure Software version 4.1.3.0 or later
Anemometer Operating Environment	55 °C to +60 °C (-67 °F to +150 °F) 0 %RH to 100 %RH
Data Logger Operating Environment	-20 °C to +60 °C (-4 °F to +140 °F) 0 %RH to 100 %RH
IP Rating	IP65
Enclosure Dimensions	2.9 in x 5.8 in x 1.5 in (74 mm x 148 mm x 39 mm)
Anemometer Dimensions	2.1 in height x 7.53 in diameter (54 mm height x 192 mm dia.) (mount post not included)
Weight	18.1 oz (513 g)
Material	Polycarbonate
Approvals	CE

**BATTERY WARNING:** Fire, explosion and severe burn hazard. Do not recharge, disassemble, heat above 100 °C (212 °F), incinerate, crush, or expose contents to water.

# Ordering Information

Wind101A (25 ft)	PN 901870-00	Wind speed data logger. Includes 3-cup anemometer with sensor connection cable (25 ft), weatherproof enclosure and the IFC200 (USB) interface cable.
Wind101A (50 ft)	PN 901877-00	Wind speed data logger. Includes 3-cup anemometer with sensor connection cable (50 ft), weatherproof enclosure and the IFC200 (USB) interface cable.
Wind101A (100 ft)	PN 901872-00	Wind speed data logger. Includes 3-cup anemometer with sensor connection cable (100 ft), weatherproof enclosure and the IFC200 (USB) interface cable.
Wind101A (150 ft)	PN 901874-00	Wind speed data logger. Includes 3-cup anemometer with sensor connection cable (150 ft), weatherproof enclosure and the IFC200 (USB) interface cable.
LTC-7PN	PN 900352-00	Replacement battery for the Wind101A

For Quantity Discounts call **(603) 456-2011** or email **sales@madgetech.com**