



## Upgrading Titan S8 Analog Firmware

The analog firmware can only be used for products with Analog Hardware Version 3.1 or greater. The version can be seen in the System Information page on the Titan S8.

1. Unzip MTU.zip to an empty flash drive root. D:\
  - a. Create a directory named MTU (D:\MTU)
  - b. Unzip the contents of MTU.zip into the MTU directory
2. Plug the thumb-drive into the Titan with power off.
3. Power up the unit and the Titan will read the thumb-drive and display the **Update Analog Firmware** dialog box. *Figure 1*
4. Press “Yes” to continue with the updating of the Analog Firmware or “No” to cancel the update. *Figure 2*
5. Upon reaching 100%, the **Analog Firmware Update Completed** dialog box will appear. *Figure 3*
6. The update has been successful, pressing “OK” will shut down the Titan.
7. Remove the flash drive. You may now power up the Titan again to resume using it.
8. The version can be verified by going to the System button and checking the software version. *Figure 4*
  - a. Analog version is the last two digits.

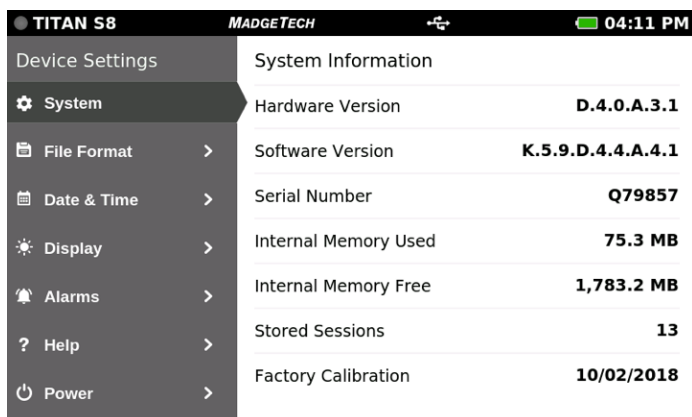


Figure 4 — System Information Screen

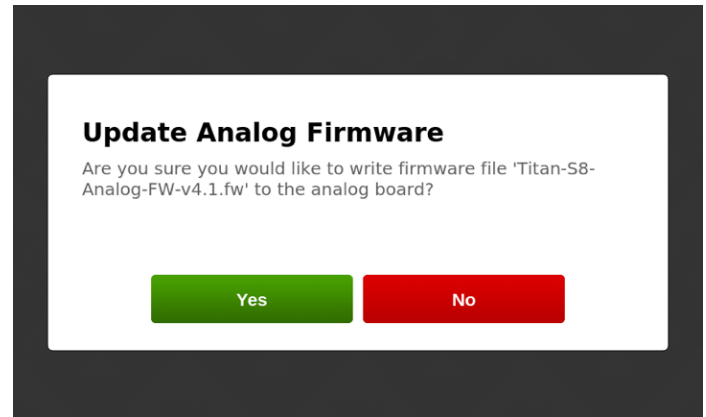


Figure 1

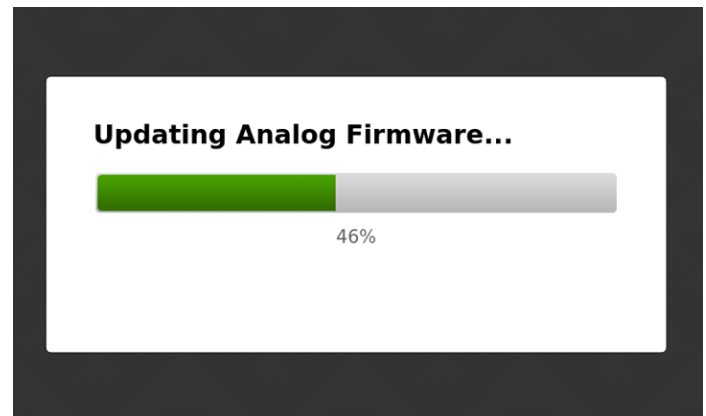


Figure 2 — Progress Dialog Box

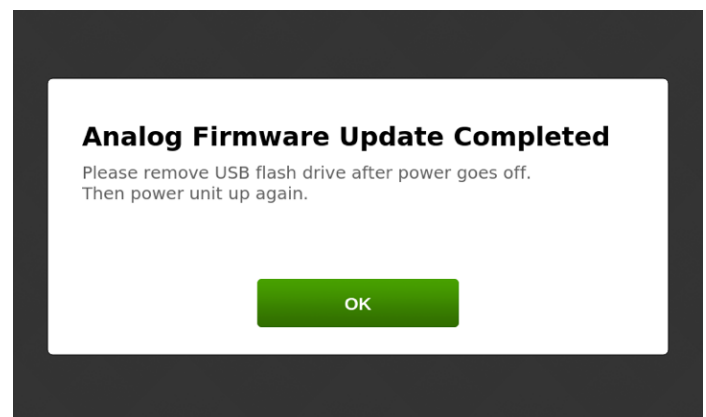


Figure 3 — Analog Firmware Update Complete



## Error Messages and Other Messages

The **Firmware File Error** message will appear if the Titan has not found a valid firmware file.

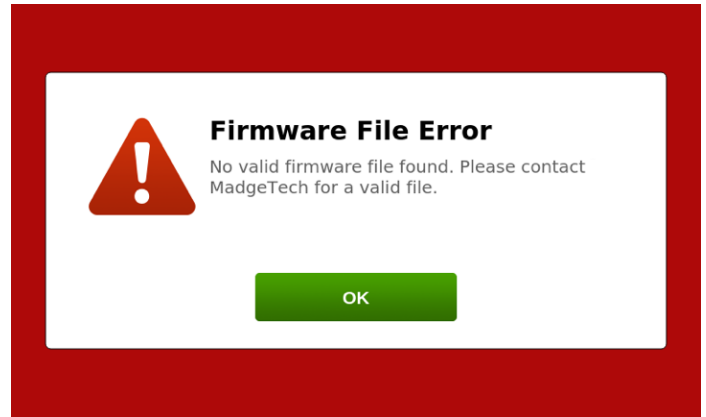


Figure 5 — Invalid Firmware File Found

The **Firmware Update Error** message will appear if the Titan could not start the update process. Pressing “Yes” will restart the update process, pressing “No” to cancel the update.

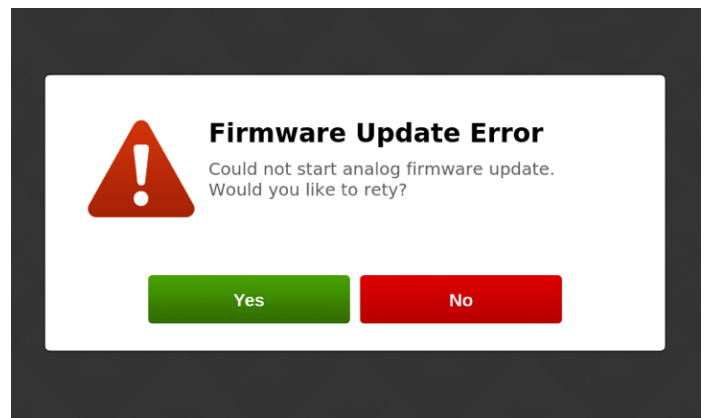


Figure 6 — Firmware Update Error

If user presses “No” for updating firmware, the Titan will display the **Analog Firmware Update Cancelled** message.

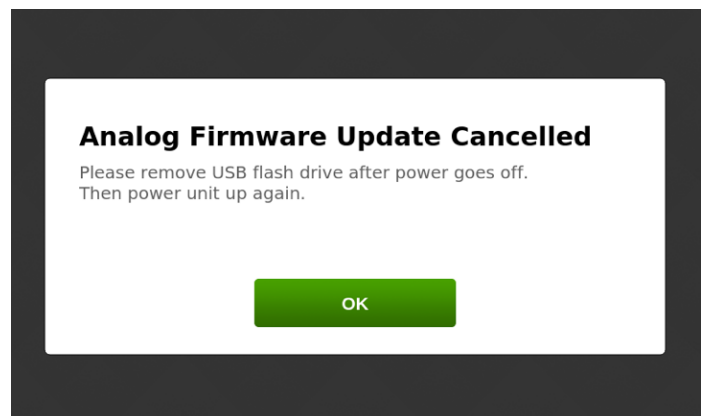


Figure 7