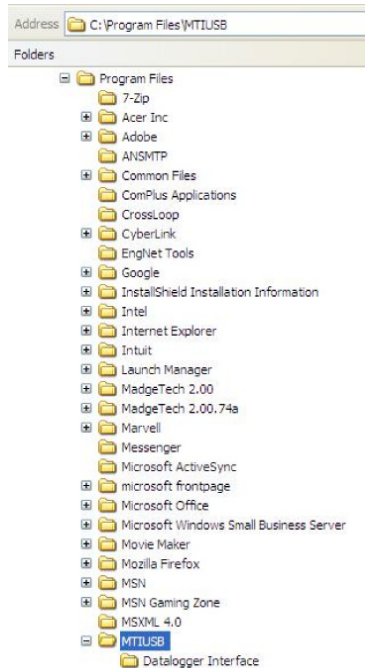


IFC200, 202, 300 Trouble Shooting FAQ

1. Plug the IFC200/IFC202/IFC300 into the PC. Does the blue light on the IFC come on? If not check to be sure that the drivers are installed. Do this by opening Window Explorer and verify that c:\Program Files\MTIUSB exists.



2. If not, please disconnect the IFC cable and download and install the USB drivers from http://www.madgetech.com/software_index.php?type=software_download
 - a. Scroll down the page until you see the "Drivers for IFC200, IFC202, IFC300" and click on "Download USB Drivers"
 - b. When prompted save USB.zip the file to a location on your hard drive that you can easily access, like a temp directory.



- c. Go to the directory where you saved the file and unzip the file (typically you can do this by right clicking on the file and selecting "Extract"). This will create a \USB directory. Go into this directory and double click on the Preinstaller.exe. This will install the drivers. Reconnect the IFC cable. Does the blue light come on? If so, the drivers are installed correctly. If not, please continue.

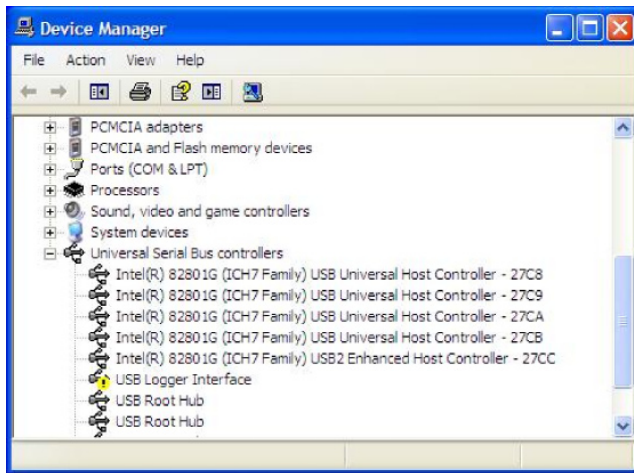
MadgeTech, Inc.
603.456.2011 phone
603.456.2012 fax

www.MadgeTech.com
support@MadgeTech.com

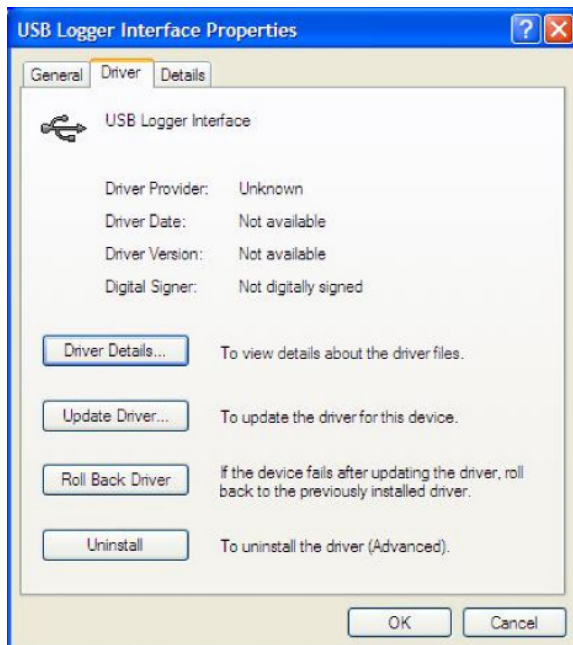
879 Maple Street,
Contoocook, NH 03229

PO Box 50
Warner, NH 03278

3. If the drivers are installed but there is no blue light on the IFC cable when connected to the PC right click on 'My Computer' and choose 'Properties'. Click on the 'Hardware' tab and click on the 'Device Manger' button.
4. In the Device Manager Window scroll down the list to 'Universal Serial Bus controllers'. Expand the list and look for 'USB Logger interface'. If it has a warning symbol (a yellow triangle with an exclamation point inside of it or a question mark)



5. Double on the USB Logger Interface. This will open 'USB Logger Interface Properties' dialog window. Click on the 'Driver' tab and then click on 'Update Driver'.



6. This will open the 'Hardware Update Wizard', select 'Yes this time only'. Click 'Next'.

MadgeTech, Inc.
603.456.2011 phone
603.456.2012 fax

www.MadgeTech.com
support@MadgeTech.com

879 Maple Street,
Contoocook, NH 03229

PO Box 50
Warner, NH 03278



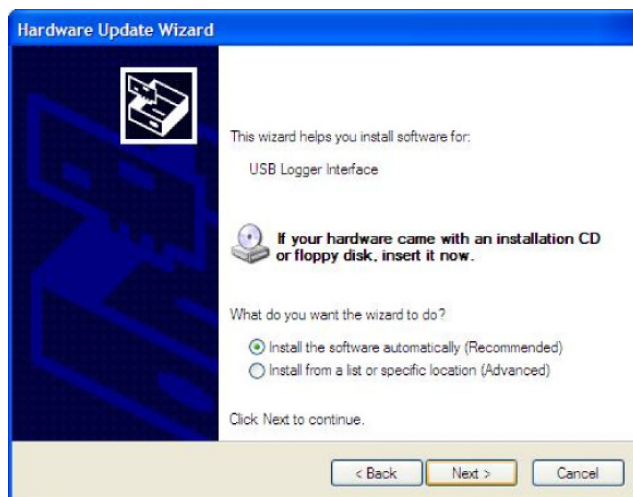
MadgeTech, Inc.
603.456.2011 phone
603.456.2012 fax

www.MadgeTech.com
support@MadgeTech.com

879 Maple Street,
Contoocook, NH 03229

PO Box 50
Warner, NH 03278

7. On the next screen select 'Install software automatically'. Click 'Next'.



8. At this point you might see a window stating that the software has not passed Microsoft Logo Testing. Click 'Continue anyway'.



9. This will complete the install. On the last screen click 'Finish'

10. The blue light should now be on. If you do not see the blue light on the IFC cable, please contact Technical support.