

DATA LOGGING SOLUTIONS BEER BREWERS



For thousands of years brewers have been perfecting the craft of beer production. Modern technology has significantly improved process control for brewers and, consequently, product quality. MadgeTech data loggers provide beverage creators with a complete picture of their mash, wort or beer at key control points that affect taste, stability and consumer safety.



The MadgeTech Advantage



Ensure safety, quality and efficiency by measuring and recording crucial data for inconsistencies that directly impact the success of a business. Our customizable data logging solutions provide real-time monitoring for applications where the slightest change in environment could be destructive. Coupled with the accuracy and reliability of our products, we also offer free software and cloud services, making compliance and validation reporting a breeze.

Why Choose MadgeTech?

At MadgeTech we take pride in maintaining meaningful relationships with our customers, going above and beyond to turn their everyday problems into new data logging solutions. To ensure the instrument's accuracy, MadgeTech offers in-house standard and customized calibration services, including ISO/IEC 17025 accredited calibrations for certain products.

Benefits:

-  Calibration
-  ISO/IEC 17025 Accreditation
-  IQ/OQ/PQ On-Site Services
-  Free Technical Support
-  Free Software
-  Cloud Services
-  21 CFR Part 11 Compliance

MadgeTech data loggers are designed, manufactured and serviced in the USA and distributed worldwide.



HEADQUARTERS
Warner, New Hampshire

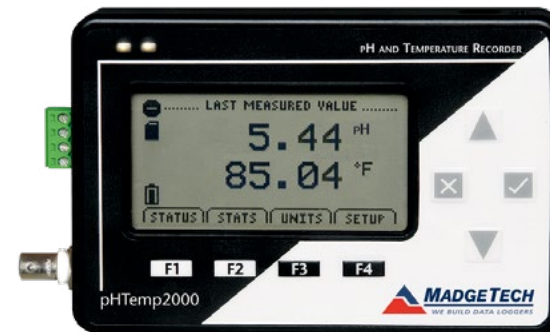
Beer Brewing Temperature Monitoring



Monitor Temperature Throughout the Brewing Process

The **MicroTemp** is a fully submersible temperature data logger specifically designed to validate high temperature processes for brewers and other beverage producers.

- Measures between $-40\text{ }^{\circ}\text{C}$ and $80\text{ }^{\circ}\text{C}$ ($-40\text{ }^{\circ}\text{F}$ to $176\text{ }^{\circ}\text{F}$)
- Monitors temperatures during fermentation
- Tracks cooling rates
- Validates pasteurization processes
- Compact enough to fit inside a bottle (2.6 in x 0.7 in)
- Rated IP68 – Fully protected against dust and water



Real-Time pH and Temperature Readings

The **pHTemp2000** offers beer producers a real-time snapshot of pH and temperature at any time during the brewing process.

- Measures pH from -2 to 16 with an accuracy of ± 0.01
- Monitors temperatures between $-40\text{ }^{\circ}\text{C}$ and $110\text{ }^{\circ}\text{C}$ ($-40\text{ }^{\circ}\text{F}$ to $230\text{ }^{\circ}\text{F}$)
- Provides real-time readings on LCD screen
- Creates a temperature and pH profile of water, mash, or finished beer
- Prevents unpleasant alkaline tastes
- Works with a variety of pH probes

Complete Facility Monitoring Solution



Wireless Pressure, Humidity and Temperature Monitoring

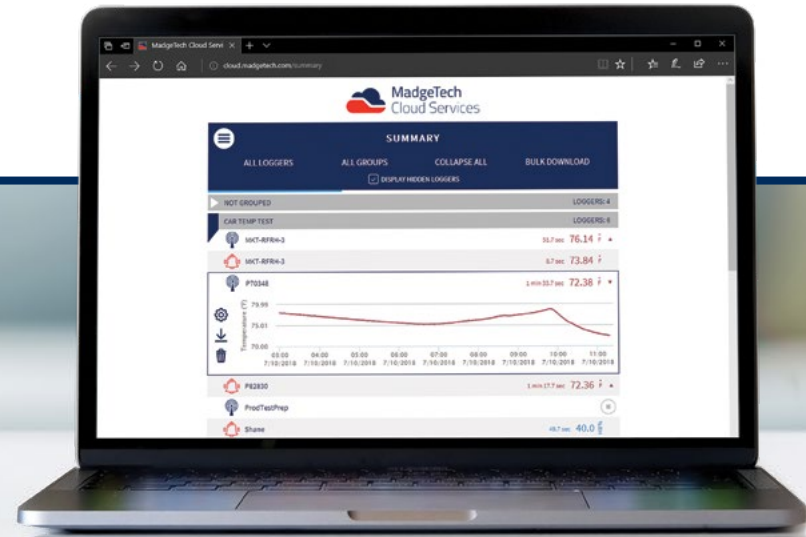
The **RFPRHTemp2000A** provides a complete facility monitoring solution for breweries, tap houses, coolers, and any other spaces that requires a controlled climate.

- Tracks temperatures from -20 °C to 60 °C (-4 °F to 140 °F)
- Measures humidity between 0% and 95%
- Monitors pressure from 250 mbar to 1,300 mbar
- Displays data locally on an LCD screen and remotely for continuous monitoring
- Aids in product loss prevention
- Alerts staff to undesirable conditions through audible and visible alarms



MadgeTech Cloud Services

Access Data Instantly and Securely
from Anywhere in the World



The **MadgeTech Cloud** is compatible with all MadgeTech wireless data loggers, providing users with instant access to real-time data from any location. With the MadgeTech Cloud, data loggers can securely transmit data to be viewed on any Internet enabled device such as a computer, tablet or smartphone.

Scalable Solution

The MadgeTech Cloud is designed to support organizations of any size. From a single data logger to a network consisting of hundreds of loggers, the MadgeTech Cloud provides facilities with on-demand data supervision, attainable results, and flexibility like never before. The MadgeTech Cloud gives users the power to have control of all their critical data right in the palm of their hand.

Cloud Capabilities

All wireless MadgeTech data loggers can transmit data to the MadgeTech Cloud to be saved, viewed and controlled. The data is available for viewing from any Internet enabled device anywhere in the world. Equipped with many features, the MadgeTech Cloud is flexible enough to adapt to any data logging needs.

New Logger Groups

Assembling data loggers is easier than ever thanks to the MadgeTech Cloud's Logger Groups. Users have the ability to organize data loggers into groups and subgroups, making all data easily accessible from one central location.

Email & Text Message Alerts

The MadgeTech Cloud allows users to configure alarms to alert for no readings, channel thresholds or battery level. When an alarm is triggered, text message or email notifications are instantly sent, giving users the ability to view the data and assess the situation immediately.



Quick and
Easy Setup



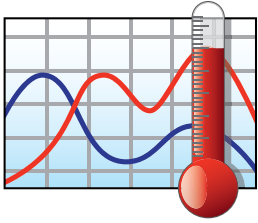
View Data
From Anywhere



Access Data
Instantly

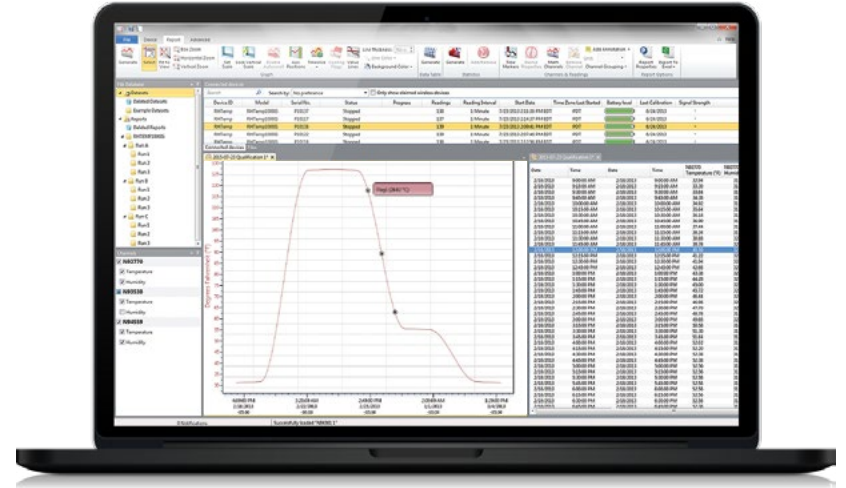


Email and Text
Notifications



MadgeTech 4 Software

The simple, easy-to-use, Windows-based software enables the user to effortlessly collect, display and analyze data. A variety of powerful tools can be used to examine, export, and print professional quality reports with just a click of the mouse. This software can be downloaded for free from the MadgeTech website.



MadgeTech 4 Software Customizable Features and Options

MadgeTech 4 Software can communicate with multiple loggers through multiple interface cables. Capable of simultaneous start, stop and download of over 100 devices, this software serves as your virtual command center for large scale facilities and small. Display your data in graphs, with tabbed views and multi-monitor support. Utilize the infinite graphing flexibility by combining channels and datasets as desired. All graphing makes use of accelerated graphics hardware for real-time updating and high performance visuals.

MadgeTech 4 Software is designed with a built-in database for automatic storage of downloaded data. The look and feel is organized much like standard email programs to aid in user friendliness and ease of use. MadgeTech 4 Software also offers extensive alarming options across multiple devices, wireless and non-wireless. Alarm output options include email, on-screen, text message and run-a-program alerts.

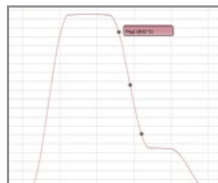
MadgeTech 4 Software has a powerful and comprehensive statistics system that allows the user to customize and view statistics as desired. Another feature is customizable engineering units. This enables users to support and program devices with many different unit types as well as the ability to display them as an alternate unit if desired.

Software Features

- Multiple Graph Overlay
- Statistics
- Digital Calibration
- Zoom In / Zoom Out
- Cooling Flags
- Lethality Equations (F0, PU)
- Mean Kinetic Temperature
- Full Time Zone Support
- Data Annotation
- User Friendly File Management
- Min. / Max. / Average Lines
- Timeslice
- Data Table View
- Automatic Report Generation
- Summary View
- Workflows / Automation



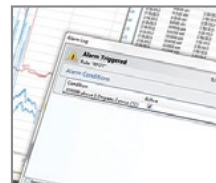
Cooling Flags



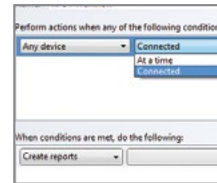
Graph View

Time	Time Zone	Delta
1:13:37 PM	-04:00	-00:05:00
1:14:37 PM	-04:00	+00:05:00
1:15:37 PM	-04:00	+00:05:00
1:16:37 PM	-04:00	+00:03:00
1:17:37 PM	-04:00	+00:04:00
1:18:37 PM	-04:00	+00:05:00
1:19:37 PM	-04:00	+00:06:00
1:20:37 PM	-04:00	+00:07:00
1:21:37 PM	-04:00	+00:08:00
1:22:37 PM	-04:00	+00:09:00
1:23:37 PM	-04:00	+00:10:00
1:24:37 PM	-04:00	+00:11:00
1:25:37 PM	-04:00	+00:12:00

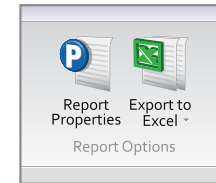
Tabular Data View



Alarm Notifications



Automation



Export to Excel