

3

Test the Data Logger Interface Operation

A

To verify that the USB Interface drivers are installed properly, check to ensure the Data Logger Software can recognize a device.

B

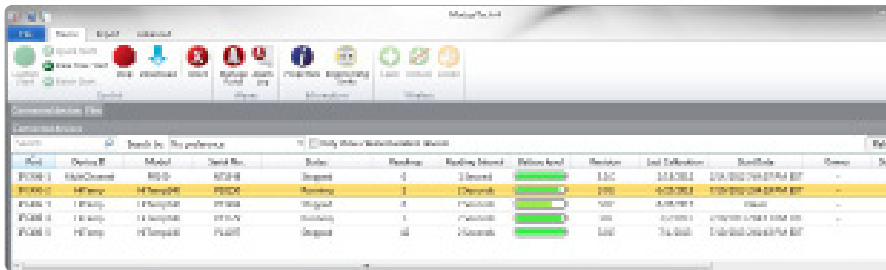
When the interface cable is connected to the PC the blue LED power indicator light should be on. If the indicator light is not on, unplug the interface cable, wait 5 seconds and plug it back into the PC.

C

Start the MadgeTech Data Logger Software. (If necessary, see the software manual for additional information on the software)

D

Your device(s) will appear in the list displayed, select your device in this list and choose your desired start method.



Additional Information

For additional information or troubleshooting assistance, visit us online at www.madgetech.com, contact us for support at e-mail support@madgetech.com or call (603) 456-2011.

MadgeTech, Inc.
6 Warner Road, Warner, NH 03278
Phone: (603) 456-2011
Fax: (603) 456-2012

support@madgetech.com
www.madgetech.com

DOC-1282027-00 REV 1 2016.08.23



IFC406 Multiplexer Data Logger Interface Quick Installation Guide



For XP SP3/Vista/Windows 7/Windows 8

Model No. IFC406

IMPORTANT: Do not connect the IFC406 to your PC until instructed to do so or the setup will not work.

1

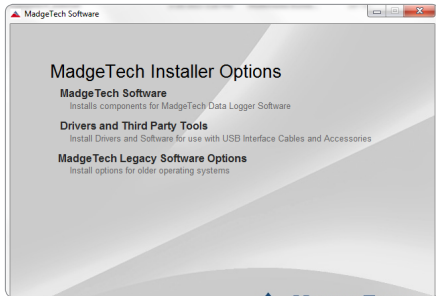
Install Software & Setup USB Data Logger Interface

IMPORTANT: If the MadgeTech 4 Software is already installed on the Windows PC, please move on to Section 1C of the Quick Installation Guide.

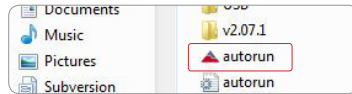
A

Insert the MadgeTech 4 Software Flash Drive into an open USB port on a Windows PC. If the autorun does not appear, locate the drive on the computer by selecting the Start menu and choosing Computer or My Computer. Browse to the Removable Disk drive corresponding to the USB port you selected.

For Windows 7 and Windows 8 users, a dialog box may appear with a list of options. Select Open Folder to View files. If you are not prompted, click the Start menu and choose Computer or My Computer and browse to the Removable Disk drive corresponding to the USB port you selected.



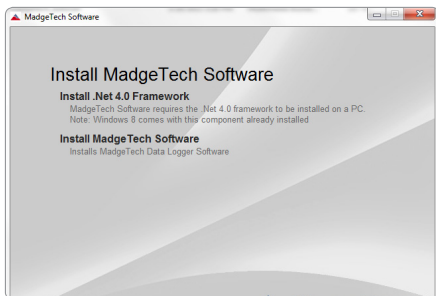
Once you locate the contents of the USB flash drive, click on auto-run.



The MadgeTech 4 Setup Screen will display with options as shown to the left.

B

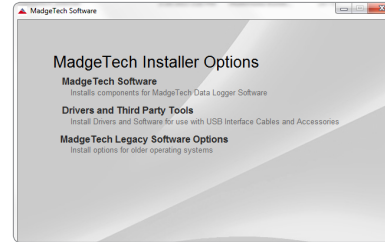
If the Windows PC doesn't already have .NET 4.0 Framework, installation may be required. Select Install .NET 4.0 Framework to install. To see if the .NET 4.0 Framework is already installed on the Windows PC, go to the Windows Control Panel and select Programs. "Microsoft .NET Framework 4.0" would be listed as a Windows program. (Note: Windows 8 comes with this component already installed).



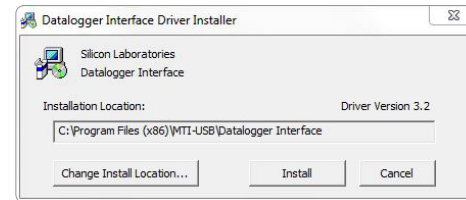
Select Install MadgeTech Software if .NET framework is installed on the Windows PC, or if installing on a Windows 8 machine. Follow the MadgeTech 4 Setup Wizard on screen prompts to complete the installation. Click back to MadgeTech contents when completed.

C

To install the drivers for the IFC406, click on the Drivers and Third Party Tools link on the MadgeTech Installer Options window panel. In the next window click on Install USB Interface Drivers. A window will appear prompting for a directory and to start the installation.



The default directory is C:\Program Files\MTI-USB\Datalogger Interface. If you choose to change the location of the install directory, select the Change Install Location button. Once you have the install location set select the Install button to start the installation.



2

Connecting the Data Logger Interface

Warning: Install driver before connecting this device.

A

Remove the Warning Label to expose the USB connector. Connect one end of the USB cable to the USB port of the IFC406.

B

Connect the other end to a USB port on your PC. When the IFC406 is plugged in, a New Hardware Found message will appear in the lower right corner of your screen. The new drivers will automatically configure themselves for use with the Interface cable. A message will then appear that the new hardware is installed and ready to use.

The installation of the USB data logger interface is complete!

