

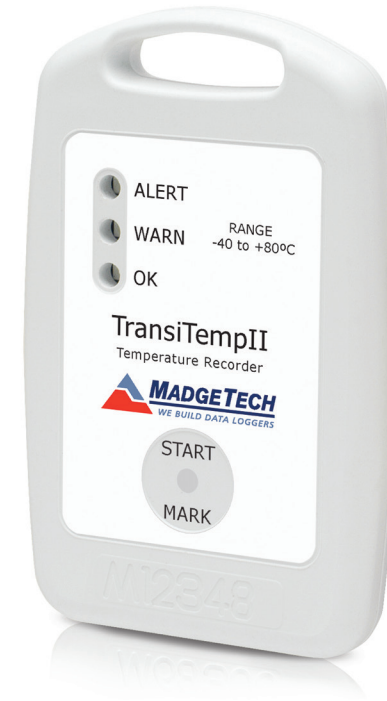
Description	TransiTempII
Temperature Sensor	Internal Semiconductor
Temperature Range	-40 °C to +80 °C (-40 °F to +176 °F)
Temperature Resolution	0.1 °C (0.18 °F)
Calibrated Accuracy	±0.5 °C (±0.9 °F)
Memory	32,767
Reading Rate	5 seconds up to 30 minutes
Alarm	Yes
LED Indicator	Red, Green & Yellow
Manual Start	Yes
Required Interface Package	IFC300
Baud Rate	38,400
Typical Battery Life	1 year
Operating Environment	-40 °C to +80 °C (-40 °F to +176 °F), 0 %RH to 100 %RH
Material	ABS plastic
Dimensions	3.3 in x 2.1 in x 0.4 in (83 mm x 54 mm x 11 mm)
Weight	1.4 oz (40 g)
Approvals	CE
Submersible	Splash Resistant (IP64)

### Battery Warning

**WARNING: FIRE, EXPLOSION, AND SEVERE BURN HAZARD. DO NOT SHORT CIRCUIT, CHARGE, FORCE OVER DISCHARGE, DISASSEMBLE, CRUSH, PENETRATE OR INCINERATE. BATTERY MAY LEAK OR EXPLODE IF HEATED ABOVE 100 °C (212 °F).**

*Specifications subject to change.*

See MadgeTech's terms and conditions at [www.madgetech.com](http://www.madgetech.com)



### TransiTempII

Cold Chain Temperature Data Logger

## Product Notes

### Manual Start

To start the data logger with the **Manual Start** option, use the magnetic wand provided (*in the IFC300*) to touch the start/mark switch. (*manual start is defaulted to a 10 minute reading rate*) The reading rate can be modified in the MadgeTech 4 Software. Connect the data logger, touch the wand to the start/mark switch, the green LED (*OK*) will blink 5 times followed by the yellow LED (*WARN*) and the red LED (*ALARM*), indicating the device is recording. The logger must be manually stopped through the MadgeTech 4 software.

### Marking Feature

A date and time stamp may be placed in the recorded data, by touching the magnetic wand to the start/mark switch. The marking feature may be configured to clear the alarm and warn indicators, while the logger is still active.

### Submergibility

The TransiTempII is splash resistant, rated IP64.

### LEDs

**Green:** Blinks to indicate safe conditions during acquisition.

**Yellow:** Blinks to indicate warning limits have been exceeded.

**Red:** Blinks to indicate alarm criteria (*limits/delay*) have been exceeded

### Alarm Settings

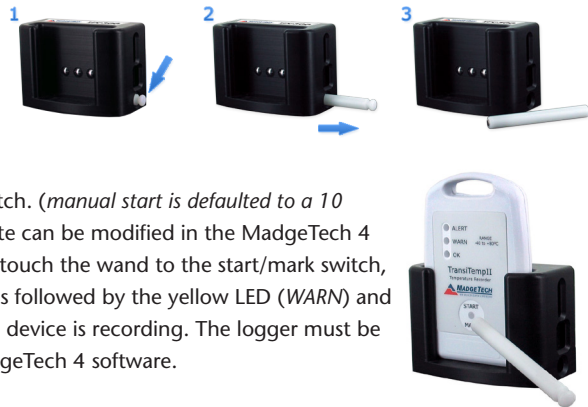
To change the settings for the temperature alarm;

- Select **Alarm Settings** from the **Device Menu** in the MadgeTech Software. A window will appear allowing the customer to set the high and low temperature alarms and warning alarms.
- Press **Change** to edit the values.
- Check **Enable Alarm Settings** to enable the feature and check each high and low, warn and alarm box to activate it. The values can be entered in the field manually or by using the scroll bars.
- Click **Save** to save the changes. To clear an active alarm or warn, press the **Clear Alarm** or **Clear Warn** button.
- To set an alarm delay, enter the duration of time into the **Alarm Delay** box in which the readings can be outside of the alarm parameters.

## Installation Guide

### Installing the Interface cable

- IFC300
- Refer to the "Quick Start Guide" included in the package.



To start the device, hold the magnetic wand over the start/mark switch. (Also indicated below)



Close-up of the start/mark switch

### Installing the software

Software can also be downloaded from the MadgeTech website at the following link: [www.madgetech.com/software-download](http://www.madgetech.com/software-download). Double click the zipped download file and follow the steps to finish downloading

### Connecting the data logger

- Once the software is installed and running, plug the interface cable into the docking station.
- Place the TransiTempII data logger into the IFC300 dock.
- In the MadgeTech 4 software the TransiTempII will automatically appear under **Connected Devices**.

Note: For additional installation instructions refer to your "Data Logger & Software Operating Manual".

## Device Operation

### Starting the data logger

- Select the device from the connected devices list.
- On the Device Ribbon tab, Control Group, select **Custom Start**.
- Choose the desired start parameters and Reading Rate suitable for your application.
- Enter in any other desired parameters and click **Start**.
- When the device is successfully started, the status will display **Running**.
- Remove the data logger from the IFC300 docking station and place it in the environment to be measured.

Note: The device will stop recording data when the end of memory is reached or the device is stopped. At this point the device cannot be restarted until it has been re-armed by the computer.

### Downloading data from a data logger

- Connect the data logger to the interface cable.
- Click the **Device Menu** then **Read Device Data**. This will offload all recorded data onto the PC.

## Device Maintenance

### Battery Replacement

The TransiTempII must be sent to MadgeTech for battery replacement.

### Recalibration

The TransiTempII standard calibration is one point at 25 °C.

Custom calibration and verification point options available, please call for pricing.

Call for custom calibration options to accommodate specific application needs.

Prices and specifications subject to change. See MadgeTech's terms and conditions at [www.madgetech.com](http://www.madgetech.com)

To send devices to MadgeTech for calibration, service or repair, please use the MadgeTech RMA Process by visiting [www.madgetech.com](http://www.madgetech.com), then under the services tab, select RMA Process.