

DATA LOGGING SOLUTIONS

---

# CHOCOLATE PROCESSORS



# The MadgeTech Advantage

---

Ensure safety, quality and efficiency by measuring and recording crucial data for inconsistencies that directly impact the success of a business. Our customizable data logging solutions provide real-time monitoring for applications where the slightest change in environment could be destructive. Coupled with the accuracy and reliability of our products, we also offer free software and cloud services, making compliance and validation reporting a breeze.

## Why Choose MadgeTech?

At MadgeTech we take pride in maintaining meaningful relationships with our customers, going above and beyond to turn their everyday problems into new data logging solutions. To ensure the instrument's accuracy, MadgeTech offers in-house standard and customized calibration services, including ISO/IEC 17025 accredited calibrations for certain products.

### Benefits:

- ▲ Calibration
- ▲ ISO/IEC 17025 Accreditation
- ▲ IQ/OQ/PQ On-Site Services
- ▲ Free Technical Support
- ▲ Free Software
- ▲ Cloud Services
- ▲ 21 CFR Part 11 Compliance

MadgeTech data loggers are designed, manufactured and serviced in the USA and distributed worldwide.



**HEADQUARTERS**  
Warner, New Hampshire

# Wireless Temperature Monitoring

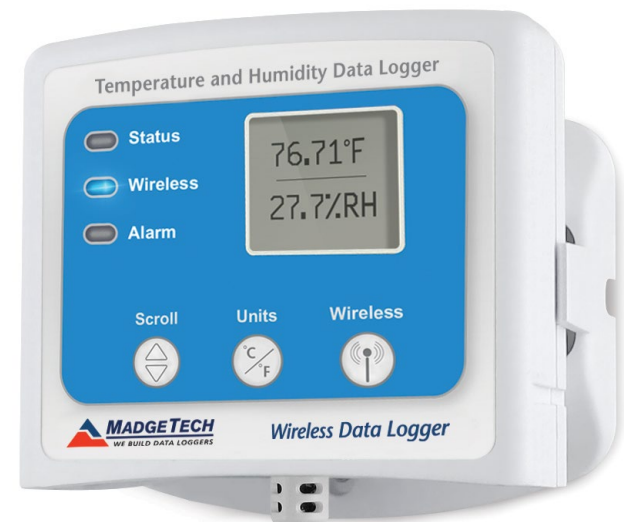


MadgeTech's temperature and humidity data loggers are used to monitor chocolate from processing to the shelf. Our data loggers can monitor temperature and humidity for chocolate processing and finished products that require specified parameters. MadgeTech's data logger options include single or multi-channel, submersible, wireless and even options with built in LCD displays.

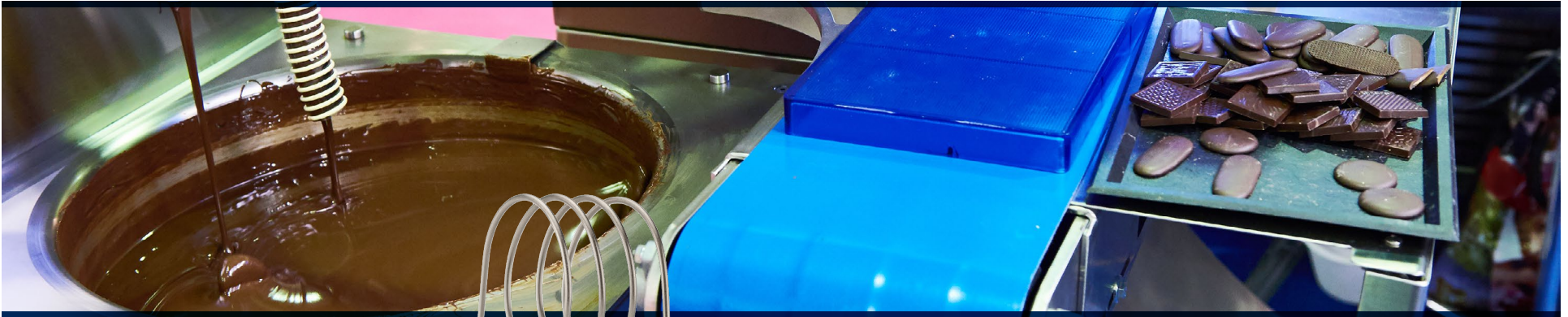
## Wireless Temperature and Humidity Monitoring

The **RFRHTemp2000A** is a two-way wireless temperature and humidity data logger with a built in LCD. This device is ideal for continuously monitoring the ambient temperature and humidity while producing or storing chocolate, caramel, sugar and other sensitive ingredients. Equipped with external humidity and RTD temperature sensors, the device provides a fast response time for both parameters and transmits real time data wirelessly.

MadgeTech's 2000A wireless data loggers feature an audible alarm to alert users in close proximity. If the temperature or humidity exceeds the safe range, the audible alarm alerts users to take immediate action. Email and SMS alerts can also be configured. MadgeTech wireless data loggers also compatible with MadgeTech Cloud Services, making real-time data available from any internet enabled device.



# Temperature Monitoring



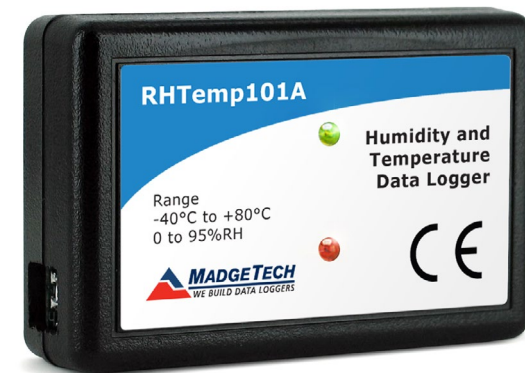
## High Temperature Data Logger

The **HiTemp140-PT** is a rugged, submersible, temperature data logger that can be exposed to 140 °C (284 °F) or up to 250 °C with a thermal shield enclosure. The device features a 24 in flexible stainless steel probe, capable of measuring temperatures up to 350 °C (662 °F). The probe is durable and can be bent or angled in any direction, making it easy to log temperatures in hard to reach places.



## Compact Temperature and Humidity Data Logger

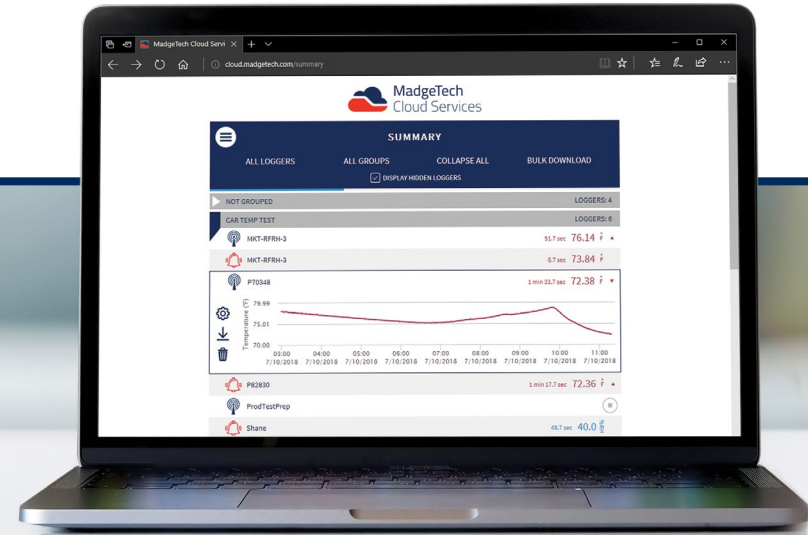
The **RHTemp101A** data logger monitors both ambient temperature and humidity. This compact device can be placed virtually anywhere to provide an accurate temperature and humidity record of the environment. Use several RHTemp101A's to capture a thorough mapping of large rooms or facilities or place them directly within display cases or shipping containers alongside the product.





# MadgeTech Cloud Services

Access Data Instantly and Securely  
from Anywhere in the World



The **MadgeTech Cloud** is compatible with all MadgeTech wireless data loggers, providing users with instant access to real-time data from any location. With the MadgeTech Cloud, data loggers can securely transmit data to be viewed on any Internet enabled device such as a computer, tablet or smartphone.

## Scalable Solution

The MadgeTech Cloud is designed to support organizations of any size. From a single data logger to a network consisting of hundreds of loggers, the MadgeTech Cloud provides facilities with on-demand data supervision, attainable results, and flexibility like never before. The MadgeTech Cloud gives users the power to have control of all their critical data right in the palm of their hand.

## Cloud Capabilities

All wireless MadgeTech data loggers can transmit data to the MadgeTech Cloud to be saved, viewed and controlled. The data is available for viewing from any Internet enabled device anywhere in the world. Equipped with many features, the MadgeTech Cloud is flexible enough to adapt to any data logging needs.

## New Logger Groups

Assembling data loggers is easier than ever thanks to the MadgeTech Cloud's Logger Groups. Users have the ability to organize data loggers into groups and subgroups, making all data easily accessible from one central location.

## Email & Text Message Alerts

The MadgeTech Cloud allows users to configure alarms to alert for no readings, channel thresholds or battery level. When an alarm is triggered, text message or email notifications are instantly sent, giving users the ability to view the data and assess the situation immediately.



Quick and  
Easy Setup



View Data  
From Anywhere



Access Data  
Instantly



Email and Text  
Notifications

# MadgeTech 4 Software



The simple, easy-to-use, Windows-based software enables the user to effortlessly collect, display and analyze data. A variety of powerful tools can be used to examine, export, and print professional quality reports with just a click of the mouse. This software can be downloaded for free from the MadgeTech website.

## MadgeTech 4 Software Customizable Features and Options

**MadgeTech 4 Software** can communicate with multiple loggers through multiple interface cables. Capable of simultaneous start, stop and download of over 100 devices, this software serves as your virtual command center for large scale facilities and small. Display your data in graphs, with tabbed views and multi-monitor support. Utilize the infinite graphing flexibility by combining channels and datasets as desired. All graphing makes use of accelerated graphics hardware for real-time updating and high performance visuals.

MadgeTech 4 Software is designed with a built-in database for automatic storage of downloaded data. The look and feel is organized much like standard email programs to aid in user friendliness and ease of use. MadgeTech 4 Software also offers extensive alarming options across multiple devices, wireless and non-wireless. Alarm output options include email, on-screen, text message and run-a-program alerts.

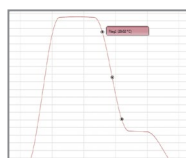
MadgeTech 4 Software has a powerful and comprehensive statistics system that allows the user to customize and view statistics as desired. Another feature is customizable engineering units. This enables users to support and program devices with many different unit types as well as the ability to display them as an alternate unit if desired.

## Software Features

- Multiple Graph Overlay
- Statistics
- Digital Calibration
- Zoom In / Zoom Out
- Cooling Flags
- Lethality Equations (F0, PU)
- Mean Kinetic Temperature
- Full Time Zone Support
- Data Annotation
- User Friendly File Management
- Min. / Max. / Average Lines
- Timeslice
- Data Table View
- Automatic Report Generation
- Summary View
- Workflows / Automation



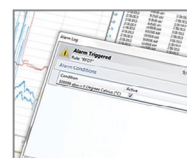
Cooling Flags



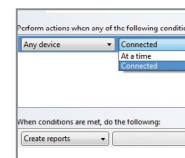
Graph View

Time	Time Zone	Delta
1:13:27 PM	-04:00	-00:00:00
1:14:27 PM	-04:00	-00:00:00
1:15:27 PM	-04:00	-00:00:00
1:16:27 PM	-04:00	-00:00:00
1:17:27 PM	-04:00	-00:00:00
1:18:27 PM	-04:00	-00:00:00
1:19:27 PM	-04:00	-00:00:00
1:20:27 PM	-04:00	-00:00:00
1:21:27 PM	-04:00	-00:00:00
1:22:27 PM	-04:00	-00:00:00
1:23:27 PM	-04:00	-00:00:00
1:24:27 PM	-04:00	-00:00:00
1:25:27 PM	-04:00	-00:00:00

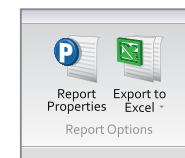
Tabular Data View



Alarm Notifications



Automation



Export to Excel