

Features

- Programmable Alarm and Warn Ranges with Alarm Delay
- Instantaneous Out of Range Indication
- Programmable or Manual Start
- Inexpensive
- Splash Resistant (IP64)
- Sleek Enclosure with Lanyard Attachment
- Multi Use
- CE Compliant

Applications

- Verification of Safe Shipment and Storage of Perishable Goods
- Implementation of HACCP Programs
- Cold Chain Monitoring
- Medical and Pharmaceutical Shipping
- Supermarkets, Warehouses, and Cold Storage

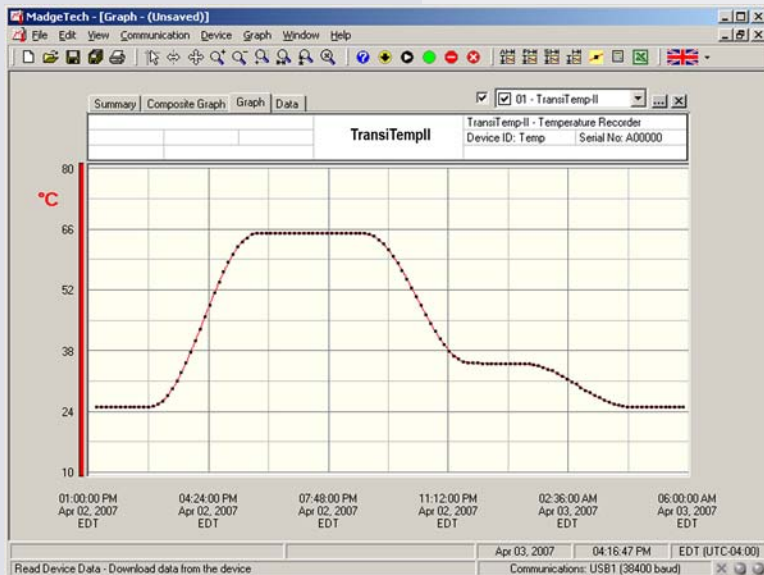
The TransiTempII is a low cost, splash proof temperature data logger featuring a highly precise semiconductor temperature sensor and an ABS plastic enclosure. This affordable, N.I.S.T. traceable device is ideal for monitoring and recording the temperature of all types of perishable products, including food items and medical/pharmaceutical goods, both in storage and in transit.

Program the TransiTempII for an immediate start or a delayed start for up to 30 days. The device can also be started by use of a magnetic wand. Because there are no buttons on this logger, there is no risk of it being accidentally stopped or started.

The reading rate can be set anywhere between once every five seconds to once every thirty minutes. The total reading capacity of the TransiTempII is 32,767 data points, one of the highest reading limits of all such loggers on the market today. For increased understanding of events that impact recorded temperatures, users can "mark" data points with a quick wave of the magnetic wand.

Three status LED indicators alert the user to the temperature status, with green signaling safe conditions, yellow indicating that warning limits have been exceeded, and red denoting that alarm limits have been exceeded.

Two of the most outstanding features of the TransiTempII are the available docking station (sold separately) and the accompanying free software. To download data, simply slip the logger into the docking station and select "Download Data." After download, the software's clear, easy-to-read graphs and data tables are automatically created and ready to use. Temperature data may be shown in degrees Celsius, Fahrenheit, Kelvin or Rankine. More complex analyses, such as Mean Kinetic Temperature, can be performed with just one click of the mouse, while users needing to perform additional analyses can easily export data to MS Excel®.



MadgeTech Data Recorder Software

displays temperature data in an easy-to-use graph.

The Windows®-based software package allows the user to effortlessly collect, display and analyze data. A variety of powerful tools allow you to examine, export, and print professional looking data with just a click of the mouse.

Click [MadgeTech Software](#) for more information or to download the software.

TRANSITEMPII SPECIFICATIONS*

<p>Temperature</p> <p>SENSOR: Semiconductor</p> <p>MEASUREMENT RANGE: -40°C to +80°C (-40 to +176°F)</p> <p>RESOLUTION: 0.1°C (18°F)</p> <p>CALIBRATED ACCURACY: ±0.5°C (±0.9°F)</p> <p>SPECIFIED ACCURACY RANGE: -10°C to +40°C (14 to +104°F)</p> <p>RESPONSE TIME: 90% of change in 30 minutes typical in slow moving air</p> <p>Calibration: Digital calibration through software</p> <p>Calibration Date: Recorded within device; software notifies user when calibration is due</p> <p>Memory: 32,767 readings; software configurable memory wrap</p> <p>Reading Rate: 5 seconds to 30 minutes, selectable in software</p> <p>Start Modes: Immediate start, delay start up to 30 days in advance, or manual start with magnetic switch</p> <p>Temperature Alarm: Configurable temperature alarm with programmable high and low alarm limits, high and low warn limits. Each set point may be individually enabled or disabled</p> <p>Alarm Delay: Programmable alarm delay inhibits alarm until alarm limits are exceeded for a total time from the start of recording</p>	<p>Blinking Status Indicators</p> <p>GREEN: Indicates safe conditions during logging</p> <p>YELLOW: Indicates warn limits have been exceeded</p> <p>RED: Indicates alarm criteria have been exceeded</p> <p>Marking Feature: Date and time stamp may be placed in the recorded data with the magnetic switch. The marking feature may be configured to clear the alarm/warn indicators.</p> <p>Password Protection: An optional password may be programmed into the device to restrict access to configuration options. Data may be read out without the password.</p> <p>Battery Type: 3.6V lithium battery, factory replaceable</p> <p>Battery Life: 1 year typical at 25°C (77°F), 1 minute reading intervals</p> <p>Time Accuracy: ±2 minutes/month at 25°C (77°F), ±5 mins./month at -10 to +40°C (14 to 104°F)</p> <p>Data Format: Date and time stamped at °C, °F, K,°R</p> <p>Computer Interface: USB docking station to PC; 38,400 baud</p> <p>Software: XP SP3/Vista/Windows 7</p> <p>Operating Environment: -40 to +80°C (-40 to 176°F), 0 to 100%RH</p> <p>Ingress Protection: IP64 (splash resistant)</p> <p>Weight: 1.4 oz (40 g)</p> <p>Dimensions: 3.3" x 2.1" x 0.4" (83mm x 54mm x 11mm)</p> <p>Enclosure: ABS plastic, white</p> <p>Compliance: CE</p>
--	---

SOFTWARE FEATURES

BATTERY WARNING: FIRE, EXPLOSION, AND SEVERE BURN HAZARD. DO NOT RECHARGE, DISASSEMBLE, HEAT ABOVE 212°F, INCINERATE OR EXPOSE CONTENTS TO WATER.

<p>Multiple Graphs: Overlay data sets to view overall representation of process being monitored.</p> <p>Real-Time Recording: Collect and display real-time data while continuing to log.</p> <p>Graphical Cursor: Displays readings by time, value, parameter or sample number.</p> <p>Data Table: Instantly access tabular view for detailed dates, times, values, and annotations.</p> <p>Scaling Options: Autoscale function automatically fits data to the screen. Manually set the axes to view a specific time period and range.</p>	<p>Statistics: Calculate averages, min, max, standard deviation, and mean kinetic temperature with the touch of a button.</p> <p>Export Data: One click exports data to Excel®.</p> <p>Calibration: Use software to automatically calculate calibration parameters and then store them in logger.</p> <p>Logger Configuration: Easily launch single or multiple loggers for immediate or delayed start, preferred sample rate and individual device ID.</p> <p>Printing: Easily print graphical or tabular data for concise recordkeeping.</p>
---	---

ORDERING INFORMATION

*SPECIFICATIONS ARE SUBJECT TO CHANGE WITHOUT NOTICE. SPECIFIC WARRANTY AND REMEDY LIMITATIONS APPLY.

Model	Description	Price (U.S.)
TransiTempII	Cold Chain/Perishables Temperature Recorder	\$49.99
IFC300	USB Docking Station, Software and Manual	\$69.00
NIST	N.I.S.T. Calibration Certificate	Call for Pricing
SVP-Secure	Protocols for validating the 21 CFR Part 11 ready, secure data logging system	\$600.00
SVP-Secure License	License for MadgeTech SVP-Secure Software (unlimited users, license per computer)	\$1000.00

ASK ABOUT OUR OTHER DATA RECORDERS	
Temperature	Pulse/Event/State
Humidity	Low Level Current
Pressure	Low Level Voltage
pH	RF Transmitters
Level	Intrinsically Safe
Shock	Spectral Vibration
LCD Display	

For Quantity Discounts call 603-456-2011 or email sales@madgetech.com



DOC: 1139009-00 REV F 2010.06.28