

Features

- Rugged
- Submersible
- Reusable
- Programmable start time
- Real-time operation
- N.I.S.T. traceable
- User-friendly
- Low cost
- CE compliant

Applications

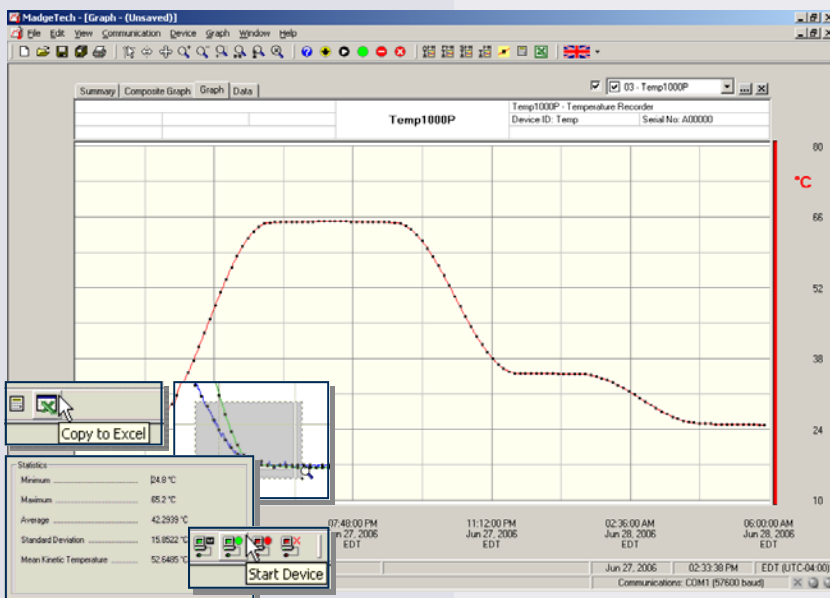
- Implement HACCP programs
- Food preparation and processing
- Environmental studies
- Well monitoring
- Dish washer testing
- Hostile environment monitoring
- Medical and Pharmaceutical



The 7" probe on the Temp1000P reaches for the temperature you need and records it with the precision you demand. The probe has a resolution of 0.05°C and a range of -100 to +260°C. (The body of the Temp1000P is rated for -40 to +125°C.)

Food processing of large items (e.g., hams, beef sides) requires temperature validation deep inside the product to ensure the cooking, cooling or storage processes were within specification. The food-grade 7" probe has a sharp point for easy insertion into the product. The Temp1000P is submersible, allowing for use during washing or spraying.

The MadgeTech software will display your data in the common units of temperature along with Kelvin and Rankin. The software also includes built-in Pasteurization Units (PU) and F0 analyses. If our powerful software doesn't do the exact analysis you need, one click is all you need to export the data into Microsoft Excel®.



MadgeTech Data Recorder Software

displays temperature data in an easy to use graph.

The Windows®-based software package allows the user to effortlessly collect, display and analyze data. A variety of powerful tools allow you to examine, export, and print professional looking data with just a click of the mouse.

Click [MadgeTech Software](#) for more information or to download the software.

TEMP1000P SPECIFICATIONS*

Temperature Sensor: 100Ω Platinum RTD	Calibration: Digital calibration through software
Temperature Range: -40 to +125°C	Calibration Date: Automatically recorded within device
Probe Range: -100 to +260°C	Battery Type: 3.6V lithium battery included, user replaceable
Temperature Resolution: 0.05°C	Battery Life: 1 year typical (1 minute reading rate at 25°C)
Calibrated Accuracy: ±0.5°C	Data Format: Date and time stamped °C, °F, K, °R
Specified Accuracy Range: 100°C span between calibration points	Time Accuracy: ±1 minute/month at 20°C (RS232 cable not in use)
Start Modes: Software programmable immediate start or delay start, up to six months in advance	Computer Interface: PC serial or USB (Interface cable required); 2,400 baud
Real-Time Recording: May be used with PC to monitor and record data in real time	Software: XP SP3/Vista/Windows 7
Memory: 32,767 readings	Operating Environment: -40 to +125°C, 0%RH to 100%RH, submersible to 150'
Reading Rate: 1 reading every 2 seconds to 1 every 12 hours	Body Dimensions: 4.5" x 1.0" dia. (115mm x 26mm dia.)
Lethality Equations: Sterilization Units and Pasteurization Units are available in software with the click of a button	Probe Dimensions: 6.75" x 3/16" dia. (172mm x 5 mm dia.)
	Enclosure: 303 stainless steel
	Probe: 304 stainless steel
	Weight: 7.3 oz (205g)
	Approvals: CE

BATTERY WARNING: RISK OF FIRE OR EXPLOSION. DO NOT RECHARGE, FORCE OPEN, HEAT OR DISPOSE OF IN FIRE.

SOFTWARE FEATURES

Multiple Graphs: Simultaneously analyze data from several units or deployments; easily switch to a single data series	Statistics: Calculate averages, min, max, standard deviation, and mean kinetic temperature with the touch of a button
Real-Time Recording: Collect and display data in real-time while continuing to log	Export Data: Export data in a variety of common formats, or switch to Excel® with a single click
Graphical Cursor: One click displays readings by time, value, parameter or sample number	Calibration: Automatically calculate and store calibration parameters
Data Table: Instantly access tabular view for detailed dates, times, values, and annotations	Logger Configuration: Easy set up and launch of data loggers with immediate or delayed start, preferred sample rate, and device ID
Scaling Options: Autoscale function fits data to the screen, or allows user to manually enter their own values	Communications: Automatically sets up communications port, or lets user select configuration
Formatting Options: Change colors, line styles, plotting options, show or hide channels quickly	Printing: Automatically print graphical or tabular data

*SPECIFICATIONS ARE SUBJECT TO CHANGE WITHOUT NOTICE. SPECIFIC WARRANTY AND REMEDY LIMITATIONS APPLY. CALL 1-603-456-2011 OR GO TO WWW.MADGETECH.COM FOR DETAILS.

ORDERING INFORMATION

<u>Model</u>	<u>Description</u>	<u>Price (U.S.)</u>
TEMP1000P	Rugged Temperature Recorder with 7" Probe	\$399.00
IFC110	Software, manual and RS232 interface cable	\$99.00
IFC200	Software, manual and USB interface cable	\$119.00
NIST	N.I.S.T. Calibration Certificate	Call for Pricing
TLH-5902	Replacement battery for Temp1000P	\$15.00

ASK ABOUT OUR OTHER DATA RECORDERS

Temperature	Pulse/Event/State
Humidity	Low Level Current
Pressure	Low Level Voltage
pH	RF Transmitters
Level	Intrinsically Safe
Shock	Spectral Vibration
LCD Display	

For Quantity Discounts call 603-456-2011 or email sales@madgetech.com



DOC-1014009-00 REV G 2010.06.28