

Features

- Flexible temperature probe
- Extended temperature range
- Rugged
- Reusable
- Submersible
- Programmable start time
- Real-time operation
- N.I.S.T. traceable
- User-friendly
- Low cost
- CE compliant

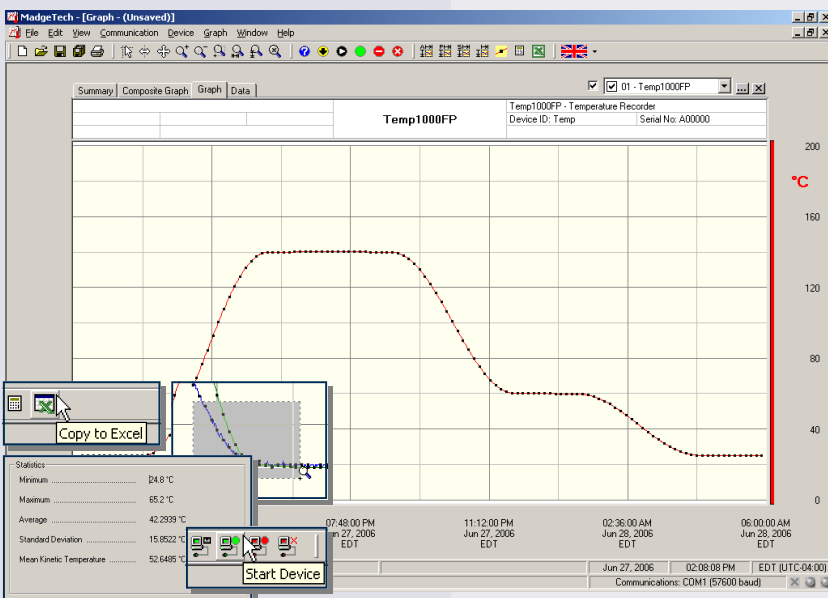
Applications

- Implement HACCP Programs
- Autoclave Verification
- Food preparation and processing
- Environmental studies
- Well monitoring
- Dish washer testing
- Hostile environment monitoring
- Medical and Pharmaceutical



* The minimum bending radius of the probe is 2", bending only once. Avoid bending the probe anywhere along it's first 2.5" from the tip.

The Temp1000FP temperature logger is a rugged, submersible, battery powered, stand alone device which can be used to automatically record temperatures between -40 and 150°C. This all in one compact, portable, easy to use device is able to measure and record up to 32,767 temperature measurements. The Temp1000FP features a 10.8" flexible external probe and is ideal for use in harsh environments. Its real time clock ensures that all the data is time and date stamped. The storage medium is non-volatile solid state memory, providing maximum data security even if the battery becomes discharged. The device can be started and stopped directly from your computer and its small size allows it to fit almost anywhere. The Temp1000FP makes data retrieval quick and easy. Simply plug the device into an empty COM or USB port and our user-friendly software does the rest.



Temp1000FP Data Recorder

MadgeTech's Data Recorder Software is an easy to use Windows®-based software package that allows the user to effortlessly collect, display and analyze data. A variety of powerful tools allow you to examine, export, and print professional looking data with just a click of the mouse.

For more information about MadgeTech Recorders or to demo our software, visit us online at: www.madgetech.com

TEMP1000FP SPECIFICATIONS*

Temperature Sensor: 100Ω Platinum RTD	Calibration: Digital calibration through software
Temperature Range: -40 to +150°C	Calibration Date: Automatically recorded within device
Probe Range: -50 to +260°C 0.05°C	Battery Type: 3.9V high-temperature lithium battery included, user replaceable
Calibrated Accuracy: ±0.5°C	Battery Life: 1 year typical (1 minute reading rate @ 25°C)
Specified Accuracy Range: 100°C span between calibration points	Data Format: Date and time stamped °C, °F, K, °R
Start Modes: Software programmable immediate start or delay start, up to six months in advance	Time Accuracy: ±1 minute/month at 20°C (RS232 cable not in use)
Real Time Recording: May be used with PC to monitor and record data in real time	Computer Interface: PC serial or USB (Interface cable required); 2,400 baud
Memory: 32,767 readings	Software: Windows 95/98/ME/NT/2000/XP/Vista based software
Reading Rate: 1 reading every 2 seconds to 1 every 12 hours	Operating Environment: -40 to +150°C, 0 to 100%RH, submersible to 150'
Lethality Equations: Sterilization Units and Pasteurization Units are available in software with the click of a button.	Dimensions (Body): 5.7" x 1.25" dia. (145mm x 32mm)
	Dimensions (Probe): 10.8" x 0.125" dia. (275mm x 4mm)
	Enclosure: 303 stainless steel
	Weight: 11.3 oz (320 g)
	Approvals: CE

BATTERY WARNING: FIRE, EXPLOSION, AND SEVERE BURN HAZARD. DO NOT SHORT CIRCUIT, CHARGE, FORCE OVERDISCHARGE, DISASSEMBLE, CRUSH, PENETRATE OR INCINERATE. BATTERY MAY LEAK OR EXPLODE IF HEATED ABOVE 150 °C (302°F).

SOFTWARE FEATURES

Multiple Graphs: Simultaneously analyze data from several units or deployments; easily switch to a single data series	Statistics: Calculate averages, min, max, standard deviation, and mean kinetic temperature with the touch of a button
Real-Time Recording: Collect and display data in real-time while continuing to log	Export Data: Export data in a variety of common formats, or switch to Excel® with a single click
Graphical Cursor: One click displays readings by time, value, parameter or sample number	Calibration: Automatically calculate and store calibration parameters
Data Table: Instantly access tabular view for detailed dates, times, values, and annotations	Logger Configuration: Easy set up and launch of data loggers with immediate or delayed start, preferred sample rate, and device ID
Scaling Options: Autoscale function fits data to the screen, or allows user to manually enter their own values	Communications: Automatically sets up communications port, or lets user select configuration
Formatting Options: Change colors, line styles, plotting options, show or hide channels quickly	Printing: Automatically print graphical or tabular data

*SPECIFICATIONS ARE SUBJECT TO CHANGE WITHOUT NOTICE. SPECIFIC WARRANTY AND REMEDY LIMITATIONS APPLY. CALL 1-603-456-2011 OR GO TO WWW.MADGETECH.COM FOR DETAILS.

ORDERING INFORMATION

Model	Description	Price (U.S.)
TEMP1000FP	Rugged Temperature Recorder with 10.8" Flexible Probe	\$649.00
IFC110	Software, manual and RS232 interface cable	\$99.00
IFC200	Software, manual and USB interface cable	\$119.00
NIST	N.I.S.T. Calibration Certificate	Call for Pricing
3B5700	Replacement battery for Temp1000FP	\$99.00

ASK ABOUT OUR OTHER DATA RECORDERS

Temperature	Pulse/Event/State
Humidity	Low Level Current
Pressure	Low Level Voltage
pH	RF Transmitters
Level	Intrinsically Safe
Shock	Spectral Vibration
LCD Display	

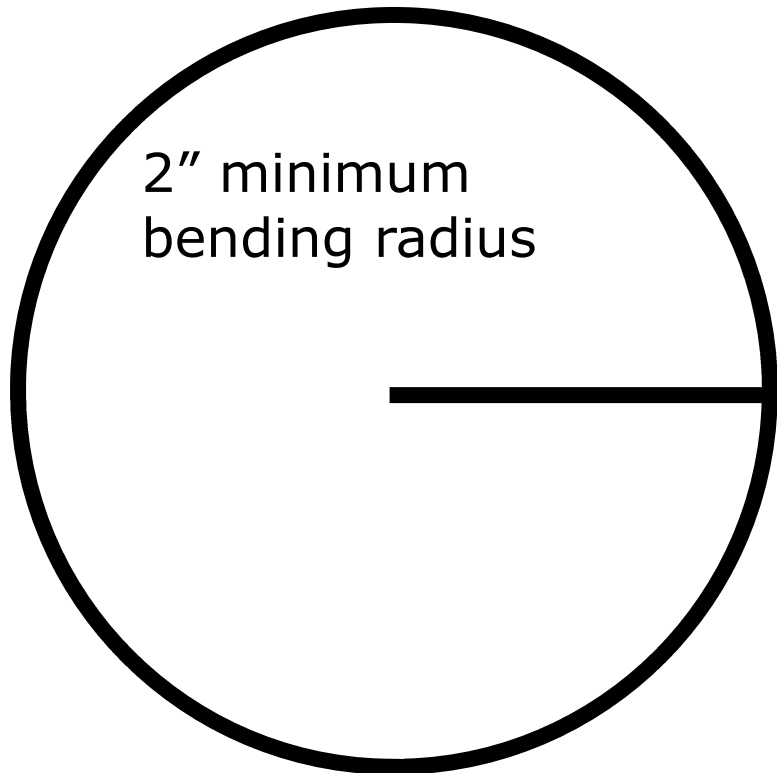
For Quantity Discounts call 603-456-2011 or email sales@madgetech.com



DOC-1013009-00 REV E 2009.07.01

The minimum bending radius of the probe is 2", bending only once. Avoid bending the probe anywhere along it's first 2.5" from the tip.

* Using an object with a 2" radius or larger, such as a coffee can, 1 quart paint can or a piece of 2" PVC pipe has proven to be a helpful guideline for bending the probe.



2.5" from tip cannot be bent

Here is an example of a probe that has been bent beyond the suggested bending radius.

