

### Features

- Rugged
- Reusable
- Submersible to 150' (45m)
- Programmable start time
- Real-time operation
- N.I.S.T. traceable
- CE compliant
- User-friendly
- Low cost

### Applications

- Implement HACCP Programs
- Food preparation and processing
- Environmental studies
- Well monitoring
- Dish washer testing
- Hostile environment monitoring
- Medical and Pharmaceutical

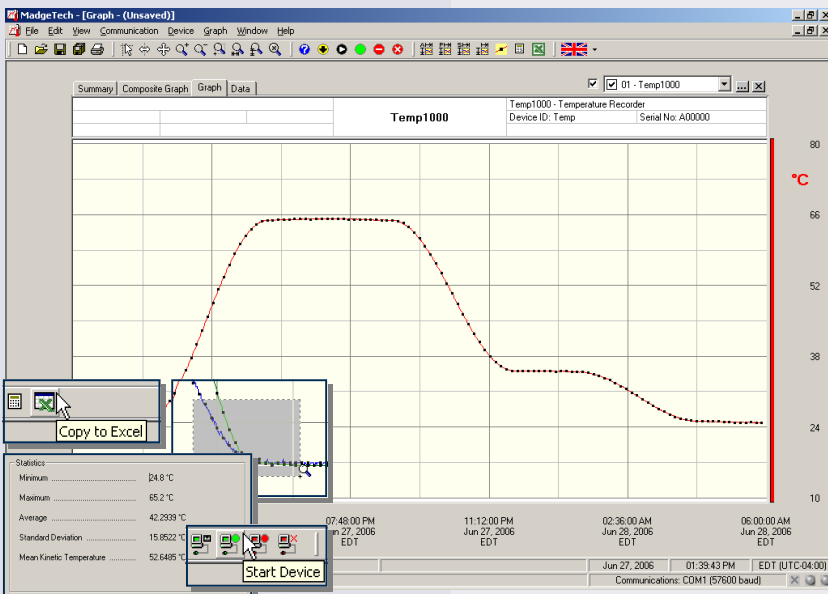


The Temp1000 is engineered for remote temperature recording in harsh environments. Its rugged enclosure lends itself to applications such as dishwashers and sterilization, and commonly used in environmental studies, food storage, medical and pharmaceutical applications.

The Temp1000 is submersible up to 150' (45m) of water and can record temperatures of up to +80°C (+176°F).

With the capability to record up to 32,767 data points and to record every two seconds, data can be captured even for brief events. The user-replaceable battery is rated to one year of typical use. The non-volatile memory will hold valuable data indefinitely even if the battery should become discharged.

The MadgeTech software will display data in degrees of Celsius, Fahrenheit, Kelvin and Rankine. The powerful software can export the data to an MS Excel® spreadsheet with one click.



**MadgeTech Data Recorder Software** displays temperature data in an easy to use graph.

The Windows®-based software package allows the user to effortlessly collect, display and analyze data. A variety of powerful tools allow you to examine, export, and print professional looking data with just a click of the mouse.

Click [MadgeTech Software](#) for more information or to download the software.

## TEMP1000 SPECIFICATIONS\*

<b>Temperature Sensor:</b> Semiconductor	<b>Calibration:</b> Digital calibration through software
<b>Temperature Range:</b> -40 to +80°C	<b>Calibration Date:</b> Automatically recorded within device
<b>Temperature Resolution:</b> 0.1°C	<b>Data Format:</b> Date and time stamped °C, °F, K, °R
<b>Calibrated Accuracy:</b> ±0.5°C (0 to +50°C)	<b>Time Accuracy:</b> ±1 minute/month at 20°C (RS232 port not in use)
<b>Memory:</b> 32,767 readings	<b>Battery Type:</b> 3.6V lithium battery included, <b>user replaceable</b>
	<b>Battery Life:</b> 1 year typical at 25°C, 1 minute reading intervals
<b>Reading Rate:</b> 1 reading every 2 seconds to 1 every 12 hours	<b>Computer Interface:</b> PC serial or USB (Interface cable required); 2,400 baud
<b>Start Modes:</b> Software programmable immediate start or delay start up to six months in advance	<b>Software:</b> Windows 95/98/ME/NT/2000/XP/Vista based software
<b>Real Time Recording:</b> May be used with PC to monitor and record data in real-time	<b>Operating Environment :</b> -40 to +80°C, 0 to 100%RH (case properly sealed); submersible to 150' (45m)
<b>Lethality Equations:</b> Sterilization Units and Pasteurization Units are available in software with the click of a button.	<b>Dimensions:</b> 4.3" X 1.0" dia. (110mm x 26mm dia.)
	<b>Weight (Aluminum) :</b> 4 oz (110 g)
	<b>Weight (Stainless) :</b> 8 oz (230 g)
	<b>Approvals:</b> CE

**BATTERY WARNING:** RISK OF FIRE OR EXPLOSION. DO NOT RECHARGE, FORCE OPEN, HEAT OR DISPOSE OF IN FIRE.

## SOFTWARE FEATURES

<b>Multiple Graphs:</b> Simultaneously analyze data from several units or deployments; easily switch to a single data series	<b>Statistics:</b> Calculate averages, min, max, standard deviation, and mean kinetic temperature with the touch of a button
<b>Real-Time Recording:</b> Collect and display data in real-time while continuing to log	<b>Export Data:</b> Export data in a variety of common formats, or switch to Excel® with a single click
<b>Graphical Cursor:</b> One click displays readings by time, value, parameter or sample number	<b>Calibration:</b> Automatically calculate and store calibration parameters
<b>Data Table:</b> Instantly access tabular view for detailed dates, times, values, and annotations	<b>Logger Configuration:</b> Easy set up and launch of data loggers with immediate or delayed start, preferred sample rate, and device ID
<b>Scaling Options:</b> Autoscale function fits data to the screen, or allows user to manually enter their own values	<b>Communications:</b> Automatically sets up communications port, or lets user select configuration
<b>Formatting Options:</b> Change colors, line styles, plotting options, show or hide channels quickly	<b>Printing:</b> Automatically print graphical or tabular data

\*SPECIFICATIONS ARE SUBJECT TO CHANGE WITHOUT NOTICE. SPECIFIC WARRANTY AND REMEDY LIMITATIONS APPLY. CALL 1-603-456-2011 OR GO TO WWW.MADGETECH.COM FOR DETAILS.

## ORDERING INFORMATION

<u>Model</u>	<u>Description</u>	<u>Price (U.S.)</u>
TEMP1000	Rugged Temperature Recorder, aluminum enclosure	\$199.00
TEMP1000-SS	Rugged Temperature Recorder, stainless steel enclosure	\$249.00
IFC110	Software, manual and RS232 interface cable	\$99.00
IFC200	Software, manual and USB interface cable	\$119.00
NIST	N.I.S.T. Calibration Certificate	Call for Pricing
TLH-5902	Replacement battery for Temp1000 (SS)	\$15.00

### ASK ABOUT OUR OTHER DATA RECORDERS

Temperature	Pulse/Event/State
Humidity	Low Level Current
Pressure	Low Level Voltage
pH	RF Transmitters
Level	Intrinsically Safe
Shock	Spectral Vibration
LCD Display	

For Quantity Discounts call 603-456-2011 or email [sales@madgetech.com](mailto:sales@madgetech.com)



DOC-1012009-00 REV D 2009.07.01