

## MEAT TEMPERATURE LOGGER WITH EXTERNAL PROBE

### Features

- Memory wrap around
- Software configurable
- Real-time operation
- Programmable start time
- User-friendly
- N.I.S.T. traceable
- IP67
- Food Safe

### Applications

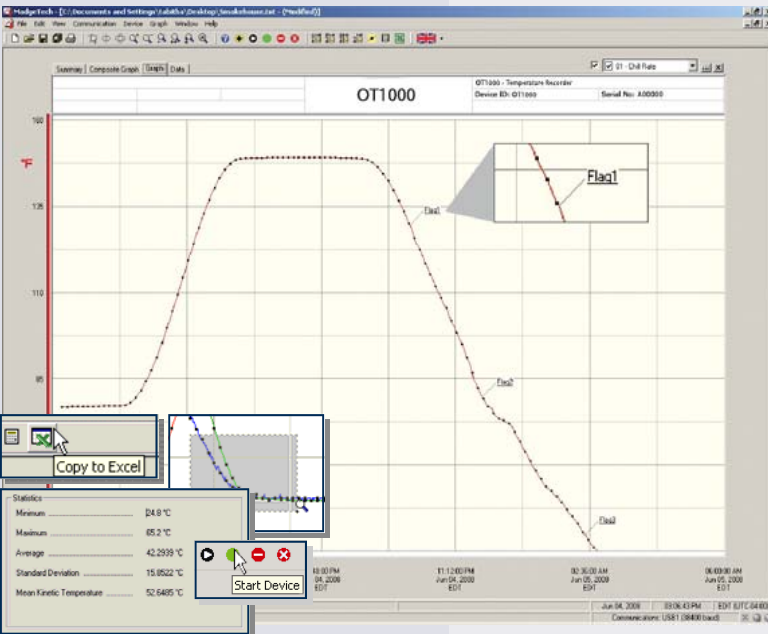
- HACCP Compliance
- Complying with USDA Regulations
- Meat Processing
- Meat Storage
- Meat Shipping
- Smoke Houses
- Precision temperature recording
- Replace costly strip chart recorders
- Food process monitoring

The MadgeTech OT1000 is a temperature data logger with a flexible external probe. This device was designed to monitor and record the cooking and cooling of meat products.

The OT1000 is made of Tecaform®, with a convenient mounting hook. The device is rated IP67, making it splashproof and easy to clean. The OT1000 is simple to use, just activate the logger, insert the probe into a meat product, and then with a couple clicks of the mouse data can be downloaded to a PC for analysis.

The MadgeTech data logger software efficiently provides users with the tools necessary to create reports and analyze data. Electronic records can then be saved for future reference.

The MadgeTech software includes temperature flags which can be set up to indicate the HACCP cool-down temperatures and calculate cool-down rates. These flags help to create a quick reference for insuring that meat has been cooked and cooled properly.



**MadgeTech Data Recorder Software** displays temperature data in an easy to use graph.

The Windows®-based software package allows the user to effortlessly collect, display and analyze data. A variety of powerful tools allow you to examine, export, and print professional looking data with just a click of the mouse.

Click [MadgeTech Software](#) for more information or to download the software.

# OT1000 SPECIFICATIONS\*

## Temperature\*\*

**Measurement Range:** -50 to +200°C

**Resolution:** 0.01°C

**Calibrated Accuracy:** ±0.1°C for -10 to +150°C  
±0.5°C outside specified range

**Specified Accuracy Range:** -50 to +200°C

## Resistance

**Nominal Range:** 0 to 5000Ω

**Resolution:** 0.001Ω

**Calibrated Accuracy:** ±0.015Ω

**Specified Accuracy Range:** 0 to 500Ω @ 25°C

**Temperature Effect on Span:** <25ppm/°C; <10ppm/°C typical

**Temperature Effect on Offset:** <10ppm cumulative over  
-30 to +70 °C

**Memory:** 21,845 readings; software configurable memory wrap

**Reading Rate:** 1 reading every 30 seconds to 1 every 12 hours

**Calibration:** Digital calibration through software

**Data Format:** Date and time stamped °C, °F, K, °R, Ω

**Time Accuracy:** ±1 minute/month (at 20 to 30°C)

**Computer Interface:** PC serial or RS232C COM (interface cable required); 57,600 baud

**Battery Type:** 3.6V lithium battery included; **user replaceable**

**Battery Life:** 1 year typical (1 min reading rate @ 25 °C)

**Software:** XP SP3/Vista/Windows 7

**Operating Environment:** -30 to +100°C, 0 to 100%RH non-condensing

**Dimensions:** Body: 8" x 1.75" dia. (203mm x 44mm dia.)  
Hook ID: 0.5" (13mm)  
Probe: 4" x 0.130" dia. (101mm x 3mm dia.)

**Weight:** 8.8 oz (250 g)

**Enclosure:** Tecaform®, food grade

\*\*Temperature specifications based on ideal 100 Ω Pt RTD compliant with IEC 751 (1983) and ITS-90, 5000Ω

**BATTERY WARNING:** FIRE, EXPLOSION, AND SEVERE BURN HAZARD. DO NOT RECHARGE, DISASSEMBLE, HEAT ABOVE 212°F, INCINERATE OR EXPOSE CONTENTS TO WATER.

## SOFTWARE FEATURES

**Multiple Graphs:** Simultaneously analyze data from several units or deployments; easily switch to a single data series

**Graphical Cursor:** One click displays readings by time, value, parameter or sample number

**Data Table:** Instantly access tabular view for detailed dates, times, values, and annotations

**Scaling Options:** Autoscale function fits data to the screen, or allows user to manually enter their own values

**Formatting Options:** Change colors, line styles, plotting options, show or hide channels quickly

**Statistics:** Calculate averages, min, max, standard deviation, and mean kinetic temperature with the touch of a button

**Export Data:** Export data in a variety of common formats, or switch to Excel® with a single click

**Calibration:** Automatically calculate and store calibration parameters

**Logger Configuration:** Easy set up and launch of data loggers with immediate or delayed start, preferred sample rate, and device ID

**Communications:** Automatically sets up communications port, or lets user select configuration

\*SPECIFICATIONS ARE SUBJECT TO CHANGE WITHOUT NOTICE. SPECIFIC WARRANTY AND REMEDY LIMITATIONS APPLY. CALL 1-603-456-2011 OR GO TO WWW.MADGETECH.COM FOR DETAILS.

## ORDERING INFORMATION

Model	Description	Price (U.S.)
OT1000	Meat temperature logger with external probe	\$399.00
IFC110	Software, manual and RS232 interface cable	\$99.00
NIST	N.I.S.T. Calibration Certificate	Call for Pricing
ER14250	Replacement battery for OT1000	\$5.00

For Quantity Discounts call 603-456-2011 or email [sales@madgetech.com](mailto:sales@madgetech.com)

### ASK ABOUT OUR OTHER DATA RECORDERS

Temperature	Pulse/Event/State
Humidity	Low Level Current
Pressure	Low Level Voltage
pH	RF Transmitters
Level	Intrinsically Safe
Shock	Spectral Vibration
LCD Display	

