

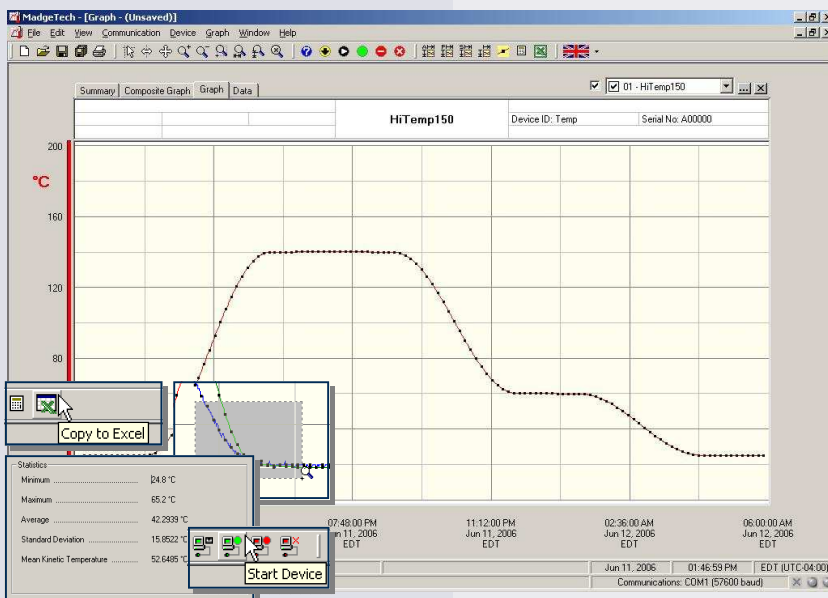
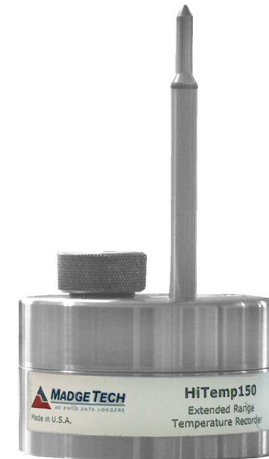
### Features

- Extended temperature range
- Rugged
- Reusable
- Submersible
- Programmable start time
- Real-time operation
- N.I.S.T. traceable
- User-friendly
- Low cost

### Applications

- Autoclave Verification
- Medical/Pharmaceutical
- Implement HACCP Programs
- Food preparation and processing
- Environmental studies
- Well monitoring
- Dish washer testing
- Hostile environment monitoring

The HiTemp150 temperature logger is a rugged, submersible, battery powered, stand alone device which can be used to automatically record temperatures between -40 and 150°C. This all in one compact, portable, easy to use device is able to measure and record up to 32,767 temperature measurements. The HiTemp150 features a 2" rigid external probe<sup>+</sup> with fast response time to ensure accurate temperature readings and is ideal for use in harsh environments. Its real time clock ensures that all the data is time and date stamped. The storage medium is non-volatile solid state memory, providing maximum data security even if the battery becomes discharged. The device can be started and stopped directly from your computer and its small size allows it to fit almost anywhere. The HiTemp150 makes data retrieval quick and easy. Simply plug the device into an empty COM or USB port and our user-friendly software does the rest.



### MadgeTech Data Recorder Software

Reports temperature data in an easy to use graph.

The Windows<sup>®</sup>-based software package allows the user to effortlessly collect, display and analyze data. A variety of powerful tools allow you to examine, export, and print professional looking data with just a click of the mouse.

Click [MadgeTech Software](#) for more information or to download the software.

## HITEMP150 SPECIFICATIONS\*

|   |  |
|---|--|
| <b>Temperature Sensor:</b> 100Ω Platinum RTD  | <b>Calibration:</b> Digital calibration through software                           |
| <b>Temperature Range:</b> -40 to +150°C   | <b>Calibration Date:</b> Automatically recorded within device                      |
| <b>Temperature Resolution:</b> 0.05°C   | <b>Battery Type:</b> 3.9V high-temperature lithium battery included                |
| <b>Calibrated Accuracy:</b> ±0.5°C  | <b>Battery Life:</b> 1 year typical (1 minute reading rate @ 25°C)                 |
| <b>Start Modes:</b> Software programmable immediate start or delay start up to six months in advance. | <b>Data Format:</b> Date and time stamped °C, °F, K, °R                            |
| <b>Real Time Recording:</b> May be used with PC to monitor and record data in real time               | <b>Time Accuracy:</b> ±1 minute/month at 20°C (RS232 cable not in use)             |
| <b>Memory:</b> 32,767 readings  | <b>Computer Interface:</b> PC serial or USB (Interface cable required); 2,400 baud |
| <b>Reading Rate:</b> One second up to once every 12 hours.  | <b>Software:</b> Windows 95/98/ME/NT/2000/XP/Vista based software                  |
|   | <b>Operating Environment:</b> -40 to +150°C, 0 to 100%RH                           |
|   | <b>Dimensions (Body):</b> 1.1" x 1.75" dia. (28mm x 45mm dia.)                     |
|   | <b>Dimensions (Probe):</b> 2.0" x 3/16" dia. (50mm x 5mm dia.)                     |
|   | ‡ <i>Other probes available</i>  |
|   | <b>Weight:</b> 8 oz (225 g)  |
|   | <b>Material</b> 316 Stainless Steel  |
|   | <b>Approvals:</b> CE   |

**WARNING:** FIRE, EXPLOSION, AND SEVERE BURN HAZARD. DO NOT SHORT CIRCUIT, CHARGE, FORCE OVERDISCHARGE, DISASSEMBLE, CRUSH, PENETRATE OR INCINERATE. BATTERY MAY LEAK OR EXPLODE IF HEATED ABOVE 150°C (302°F).

## SOFTWARE FEATURES

|  |   |
|--|---|
| <b>Multiple Graphs:</b> Simultaneously analyze data from several units or deployments; easily switch to a single data series | <b>Statistics:</b> Calculate averages, min, max, standard deviation, and mean kinetic temperature with the touch of a button              |
| <b>Real-Time Recording:</b> Collect and display data in real-time while continuing to log                                    | <b>Export Data:</b> Export data in a variety of common formats, or switch to Excel® with a single click                                   |
| <b>Graphical Cursor:</b> One click displays readings by time, value, parameter or sample number                              | <b>Calibration:</b> Automatically calculate and store calibration parameters  |
| <b>Data Table:</b> Instantly access tabular view for detailed dates, times, values, and annotations                          | <b>Logger Configuration:</b> Easy set up and launch of data loggers with immediate or delayed start, preferred sample rate, and device ID |
| <b>Scaling Options:</b> Autoscale function fits data to the screen, or allows user to manually enter their own values        | <b>Communications:</b> Automatically sets up communications port, or lets user select configuration                                       |
| <b>Formatting Options:</b> Change colors, line styles, plotting options, show or hide channels quickly                       | <b>Printing:</b> Automatically print graphical or tabular data  |

\*SPECIFICATIONS ARE SUBJECT TO CHANGE WITHOUT NOTICE. SPECIFIC WARRANTY AND REMEDY LIMITATIONS APPLY. CALL 1-603-456-2011 OR GO TO WWW.MADGETECH.COM FOR DETAILS.

## ORDERING INFORMATION

| <u>Model</u>       | <u>Description</u>  | <u>Price (U.S.)</u> |
|--------------------|---|---------------------|
| HITEMP150          | Extended Range Temperature Recorder   | \$499.00            |
| IFC110             | Software, manual and RS232 interface cable  | \$99.00             |
| IFC200             | Software, manual and USB interface cable  | \$119.00            |
| NIST               | N.I.S.T. Calibration Certificate  | Call for Pricing    |
| 3B5700             | Replacement battery for HiTemp150   | \$99.00             |
| SVP –Secure        | Protocols for validating the 21 CFR Part 11 ready, secure data logging system     | \$600.00            |
| SVP-Secure License | License for MadgeTech SVP-Secure Software (unlimited users, license per computer) | \$1000.00           |

### ASK ABOUT OUR OTHER DATA RECORDERS

|             |                    |
|-------------|--------------------|
| Temperature | Pulse/Event/State  |
| Humidity    | Low Level Current  |
| Pressure    | Low Level Voltage  |
| pH          | RF Transmitters    |
| Level       | Intrinsically Safe |
| Shock       | Spectral Vibration |
| LCD Display |                    |

For Quantity Discounts call 603-456-2011 or email [sales@madgetech.com](mailto:sales@madgetech.com)

