

Features

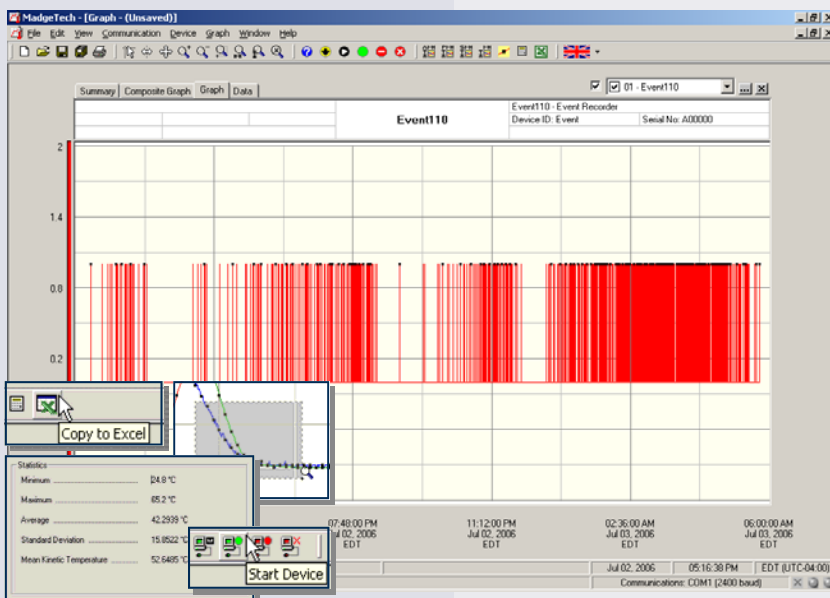
- 10 year battery life
- High speed download
- Miniature size
- Reusable
- Real-time operation
- Programmable engineering units
- Interfaces to tipping bucket rain gauges and contact closures
- User-friendly
- Low cost

Applications

- Monitoring gas, water or electric meters
- Rainfall monitoring
- Contact closure monitoring
- Time studies
- Traffic studies
- Replace costly strip chart recorders

The Event110 is a miniature, low-cost, recording device which senses input transitions or contact closures from external sources such as transducers and/or event initiators and records the time

that a particular event has occurred. The device can store up to 13,107 time stamped events. Once activated the Event110 senses and records transition or state changes at the input. The devices real-time clock ensures that all data is time and date stamped. The storage medium is non-volatile solid state memory, providing maximum data security even if the battery becomes discharged. The device can be started and stopped directly from your computer and its small size allows it to fit almost anywhere. The Event110 makes data retrieval quick and easy. Simply plug it into an empty COM or USB port and our user-friendly software does the rest.



MadgeTech Data Recorder Software displays event data in an easy to use graph.

The Windows®-based software package allows the user to effortlessly collect, display and analyze data. A variety of powerful tools allow you to examine, export, and print professional looking data with just a click of the mouse.

Click [MadgeTech Software](#) for more information or to download the software.

EVENT110 SPECIFICATIONS*

Input Connection: Removable screw terminal	Memory: 13,107 events; software configurable memory wrap
Input Range: 0 to 12VDC continuous; (0 to 30VDC peak)	**Reading Interval: 1 reading every second to 1 every 12 hours
Input Low: <0.4V	
Input High: >2.7V	Start Modes: Software programmable immediate start or delay start up to six months in advance
Internal Weak Pull-up: <500µa	
Recommended Duty Cycle for inputs greater than 12VDC (over 1 min. interval): 18V: <50% 24V: <25% 30V: <10%	Visual Indicator: LED flashes to indicate events
Input Impedance: >1kΩ	Battery Type: 3.6V lithium battery included; user replaceable
Minimum Input Active (Low) Time: 4 millisecond	Battery Life: 10 years typical at 25°C
	Data Format: Date and time stamped events (true/false), user defined engineering units
Time Resolution: 1 second (reading rate dependent)	Time Accuracy: ±1 minute/month (at 20 °C, RS232 cable not in use)
Engineering Units: User may define units up to 10 characters in length. This value is stored within the device.	Computer Interface: PC serial or USB (interface cable required); 57,600 baud
Scale Factor: User may program any desired scaling factor from ±1.000E-31 to ±9.999E+31. The scaling factor is stored within the	Software: XP SP3/Vista/Windows 7
Offset Value: User may program any desired offset value from ±1.0000E-31 to ±9.9999E+31. The factor is stored in the device.	Operating Environment: -40 to +80°C, 0 to 95%RH non-condensing
	Dimensions: 1.7" x 2.7" x 0.8" (44mm x 69mm x 21mm)
Real Time Recording: May be used with PC to monitor and record data in real time	Weight: 1.1 oz (30 g)
	Materials: ABS plastic
	Approvals: CE
	**Device will record one event per user defined reading interval

BATTERY WARNING: FIRE, EXPLOSION, AND SEVERE BURN HAZARD. DO NOT RECHARGE, DISASSEMBLE, HEAT ABOVE 212°F, INCINERATE OR EXPOSE CONTENTS TO WATER.

SOFTWARE FEATURES

Multiple Graphs: Simultaneously analyze data from several units or deployments; easily switch to a single data series	Statistics: Calculate averages, min, max, standard deviation, and mean kinetic temperature with the touch of a button
Graphical Cursor: One click displays readings by time, value, parameter or sample number	Export Data: Export data in a variety of common formats, or switch to Excel® with a single click
Data Table: Instantly access tabular view for detailed dates, times, values, and annotations	Calibration: Automatically calculate and store calibration parameters
Scaling Options: Autoscale function fits data to the screen, or allows user to manually enter their own values	Logger Configuration: Easy set up and launch of data loggers with immediate or delayed start, preferred sample rate, and device ID
Formatting Options: Change colors, line styles, plotting options, show or hide channels quickly	Communications: Automatically sets up communications port, or lets user select configuration

*SPECIFICATIONS ARE SUBJECT TO CHANGE WITHOUT NOTICE. SPECIFIC WARRANTY AND REMEDY LIMITATIONS APPLY. CALL 1-603-456-2011 OR GO TO WWW.MADGETECH.COM FOR DETAILS.

ORDERING INFORMATION

<u>Model</u>	<u>Description</u>	<u>Price (U.S.)</u>
EVENT110	Event Recorder with 10 year battery	\$199.00
IFC110	Software, manual and RS232 interface cable	\$99.00
IFC200	Software, manual and USB interface cable	\$119.00
LTC-7PN	Replacement battery for Event110	\$10.00

For Quantity Discounts call 603-456-2011 or email sales@madgetech.com

ASK ABOUT OUR OTHER DATA RECORDERS

Temperature	Pulse/Event/State
Humidity	Low Level Current
Pressure	Low Level Voltage
pH	RF Transmitters
Level	Intrinsically Safe
Shock	Spectral Vibration
LCD Display	



DOC-1070009-00 REV E 2010.06.28