

CURRENT RELAY SWITCHES

Features

- Adjustable current threshold
- Built-in relay for easy/safe deployment
- Status LED's for visual ON/OFF indication
- Self-powered, no external power required
- Small size fits small enclosures
- Screw terminal connection
- Split-core for easy installation

Applications

- Monitor ON/OFF status of electrical loads
- Detect usage in motors, pumps, fans and compressors
- Verify run times for lighting, electric service, A/C, furnace
- Industrial process equipment status
- Detect short-cycling
- Switch and relay ON/OFF status
- Duty cycle monitoring in freezer and refrigeration

The current relay switches operate with the following MadgeTech State Recorders : State101, State110, QuadState and OctState. They feature screw terminals to easily wire to the State logger screw terminal inputs. All are split-core for easy installation, except the CT-800, which is a solid-core model. Mounting bracket and screws are also included with the CT-H600 and CT-H608 models.

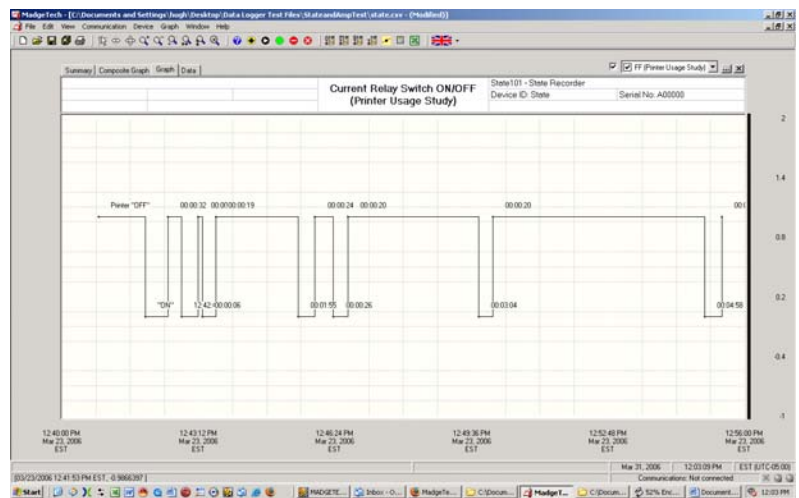
Used in a variety of applications, the split-core current switches are employed to detect the presence of AC current when equipment is drawing power. When power is present it activates a built-in relay switch to provide an analog, "ON" status signal. When power is not present, the relay switch deactivates to provide an "OFF" status signal. These self-powered switches make installation easy and safe. Some models have adjustable threshold set points, to activate the relay when it reaches a certain amperage level.



When used with the MadgeTech family of State Recorders*, the status change data- "ON/ OFF" can be recorded with a time and date stamp to provide equipment usage information. This data is essential to determine the duration of a particular event or to calculate the cost of power. They enable the assessment of equipment and lights, servicing or repairs, in the detection of defective equipment, short-cycling.

*[State101](#), [State110](#), [QuadState](#) and [OctState](#)

Software Graph State Logger paired with the Current Relay Switch indicates the ON/ OFF Status.



For more information on MadgeTech State recorders or to demo our software go online to www.madgetech.com

SPECIFICATIONS AND ORDERING INFORMATION

Model	Range	Setpoint	Status LED	Output	Dimensions	Opening Size	Price
CT-H600	0.15 – 200A	Fixed, 0.15A	NO	N.O.*	2.34" x 2" x .92"	.52" x .68"	\$ 65.00
CT-H608	1.25 – 50A	Adjustable from 1.25A	YES	N.O.*	2.34" x 2.15" x .92"	.52" x .68"	\$ 100.00
CT-800	1 – 250A	Fixed, 1A (Solid-core)	NO	N.O.*	2.5" x 2.2" x 0.93"	0.75" diameter	\$ 40.00
CT-805	1.5 to 250A	Fixed, 1.5A	NO	N.O.*	2.6" x 2.25" x 1.15"	0.85" x 0.85"	\$ 50.00
CT-815	1.5 to 250A	Adjustable from 1.5A	YES	N.O.*	2.4" x 2.25" x 1.19"	0.85" x 0.85"	\$ 70.00

*N.O.—Normally Open

*SPECIFICATIONS ARE SUBJECT TO CHANGE WITHOUT NOTICE. SPECIFIC WARRANTY AND REMEDY LIMITATIONS APPLY. CALL 1-603-456-2011 OR GO TO WWW.MADGETECH.COM FOR DETAILS.