

### Features

- Large, backlit LCD display
- Front keypad w/lock feature
- User-selectable measurement units
- Simultaneous display of temperature, humidity and pressure
- N.I.S.T. traceable calibration
- Min./max. & average statistics
- Programmable start/stop time
- Convenient status indicators
- User replaceable battery and external power
- Wall mountable
- CE Approved

### Applications

- Laboratory monitoring
- Warehouse monitoring
- Museum monitoring
- HVAC applications
- Medical and pharmaceutical facility monitoring
- Environmental studies
- HACCP program implementation
- Food storage
- Live cargo transport

The PRHTemp2000 is perfect for applications requiring instant remote readings of environmental parameters, including temperature, humidity and atmospheric pressure.

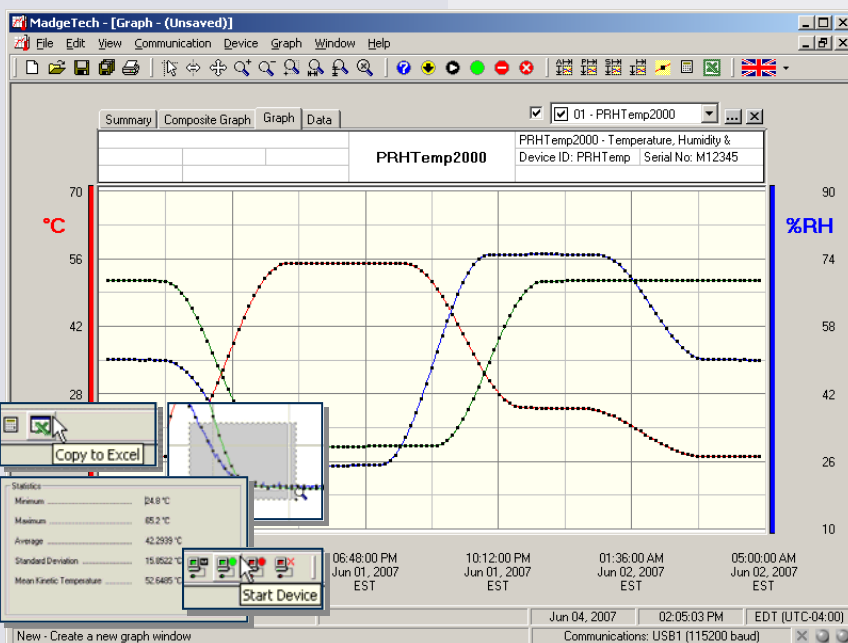
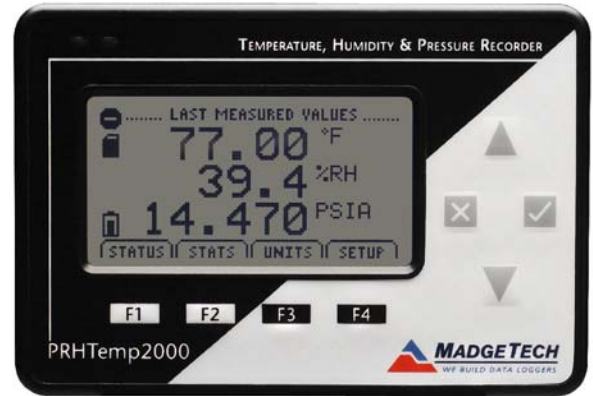
The 8-button keypad and large LCD provide convenient access to current data and recorder setup. Additionally, memory and battery levels, external power status, and sampling and recording status are shown on the LCD.

Available on-screen data includes: statistics (min, max, average) for all three channels; recording status (start, stop and recording rate); display options (channels shown, units, text size); and calibration information (date calibrated, date for recalibration). Statistics can be cleared at any time during logging.

With 87,381 readings per channel, the PRHTemp2000 has one of the largest memory capacities of any similar data recorder on the market. The non-volatile memory will retain recorded data, even if AC and battery power are lost.

The PRHTemp2000 typically runs up to one month on a user-replaceable 9V battery. For power savings, both the LCD and backlight have configurable auto-off options. Those wanting to keep the LCD display and backlight continuously active need only to plug the unit to an AC power supply, keeping the 9V battery connected as a back-up.

N.I.S.T. traceable calibration is available for users needing to meet regulatory requirements. Creating permanent records, performing data calculations, and the graphing of data is quick and easy: Simply connect the interface cable to an available USB or serial port and, with a few clicks of the mouse, data is downloaded and ready for review or export to Excel®.



### MadgeTech Data Recorder Software

displays pressure, humidity and temperature data in an easy to use graph.

The Windows®-based software package allows the user to effortlessly collect, display and analyze data. A variety of powerful tools allow you to examine, export, and print professional looking data with just a click of the mouse.

Click [MadgeTech Software](#) for more information or to download the software.

# PRHTEMP2000 SPECIFICATIONS\*

## TEMPERATURE

**Range:** -20 to +60°C

**Resolution:** 0.1°C

**Calibrated Accuracy:** ±0.5°C (0 to +50°C)

## HUMIDITY

**Range:** 0 to 95%RH

**Resolution:** 0.1%RH

**Calibrated Accuracy:** ±3%RH (±2%RH typical at 25°C)

**Specified Accuracy Range:** +10 to +40°C, 10 to 80%RH

## PRESSURE

**Range:** 0 to 30PSIA

**Resolution:** 0.002PSIA

**Calibrated Accuracy:** ±1.0%FSR at 25°C; ±0.2% typical

## DOT-MATRIX LCD

**Dimensions:** 2.5" x 1.375" (63mm x 35mm)

**Text:** Configurable channel text size

**Indicators:** Power, status, memory

**Backlight:** Configurable w/auto shut-off and contrast adjustment

**BATTERY WARNING:** MAY LEAK AND/OR FLAME IF OPENED, RECHARGED, CONNECTED IMPROPERLY, OR DISPOSED OF IN FIRE.

## SOFTWARE FEATURES

**Multiple Graphs:** Simultaneously analyze data from several units or deployments; easily switch to a single data series

**Real-Time Recording:** Collect and display data in real-time while continuing to log

**Graphical Cursor:** One click displays readings by time, value, parameter or sample number

**Data Table:** Instantly access tabular view for detailed dates, times, values, and annotations

**Scaling Options:** Autoscale function fits data to the screen, or allows user to manually enter their own values

**Formatting Options:** Change colors, line styles, plotting options, show or hide channels quickly

**Start/Stop Time:** Software programmable start time and date, up to six months in advance; programmable stop time

**Memory:** 87,381 readings per channel; 262,143 total readings; software configurable memory wrap

**Reading Rate:** 1 reading every 2 seconds to 1 every 24 hours

**Calibration:** Digital calibration through software

**Calibration Date:** Automatically recorded within device

**Battery Type:** 9V lithium battery included, **user replaceable**; optional AC adapter

**Battery Life:** 1 year battery life at 1 min reading rate with display off. 30 days typical with continuous LCD and no backlight usage.

**Unit Display:** Date and time stamped °C, °F, K, °R ; %RH, mg/ml water vapor concentration, dew point; PSIA, inHg, mmHg, bar, mbar, atm, Torr, Pa, hPa, kPa, MPa, inH2O, ftH2O, mH2O, ft alt, m alt

**Time Accuracy:** ±1 minute/month (at 20° to 30°C)

**Computer Interface:** PC serial or USB (interface cable required); 115,200 baud

**Software:** Windows 95/98/ME/NT/2000/XP/Vista based

**Operating Environment:** -20 to +60°C, 0 to 95%RH non-condensing

**Dimensions:** 4.8" x 3.3" x 1.25" (122mm x 84mm x 32mm)

**Weight:** 16 oz (440 g)

**Enclosure:** Black anodized aluminum

**Approvals:** CE Approved.

**Statistics:** Calculate averages, min, max, standard deviation, and mean kinetic temperature with the touch of a button

**Export Data:** Export data in a variety of common formats, or switch to Excel® with a single click

**Calibration:** Automatically calculate and store calibration parameters

**Logger Configuration:** Easy set up and launch of data loggers with immediate or delayed start, preferred sample rate, and device ID

**Communications:** Automatically sets up communications port, or lets user select configuration

**Printing:** Automatically print graphical or tabular data

\*SPECIFICATIONS ARE SUBJECT TO CHANGE WITHOUT NOTICE. SPECIFIC WARRANTY AND REMEDY LIMITATIONS APPLY. CALL 1-603-456-2011 OR GO TO WWW.MADGETECH.COM FOR DETAILS.

## ORDERING INFORMATION

Model	Description	Price (U.S.)
PRHTEMP2000	Pressure, Humidity and Temperature Recorder w/ LCD Display	\$499.00
IFC110	Software, manual and RS232 interface cable	\$99.00
IFC200	Software, manual and USB interface cable	\$119.00
NIST	N.I.S.T. Calibration Certificate	Call for Options and Pricing
U9VL-J	Replacement battery for PRHTemp2000	\$15.00
DC9V-NA	9 Volt AC wall mounted Adapter (North American version)	\$13.00
DC9V-EU	9 Volt AC wall mounted Adapter (European version)	\$13.00

### ASK ABOUT OUR OTHER DATA RECORDERS

Temperature	Pulse/Event/State
Humidity	Low Level Current
Pressure	Low Level Voltage
pH	RF Transmitters
Level	Intrinsically Safe
Shock	Spectral Vibration
LCD Display	

For Quantity Discounts call 603-456-2011 or email [sales@madgetech.com](mailto:sales@madgetech.com)

