

## 64 bit USB Drivers

The release of the new 64-bit compliant USB drivers requires that the customer also upgrade to the newest version of the MadgeTech software. Therefore, it is now possible to have a mismatch of drivers and software which will prevent communication with MadgeTech data loggers. This situation would manifest itself in a number of ways depending on which combination of driver and software is installed. The most common symptoms of this situation are listed in the table below.

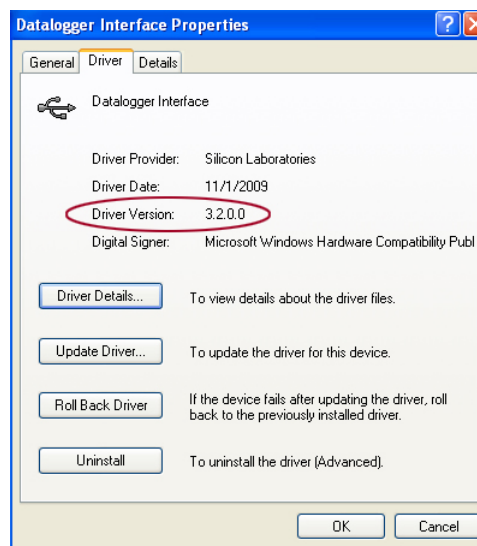
	Version 2.03.X and higher	Version 2.02.5 and below
<b>Old Drivers</b>	<ul style="list-style-type: none"> <li>Will not work "The currently installed USB drivers are out of data. Until they are updated, USB functionality will be disabled." (when starting software)</li> <li>"Unable to Initialize Port!" (when selecting USB)</li> </ul>	Works Correctly
<b>New Drivers</b>	Works Correctly	Not able to find active device.

MadgeTech, Inc.  
(603) 456-2011 Phone  
(603) 456-2012 Fax  
www.madgetech.com  
support@madgetech.com

6 Warner Road  
Warner, NH 03278

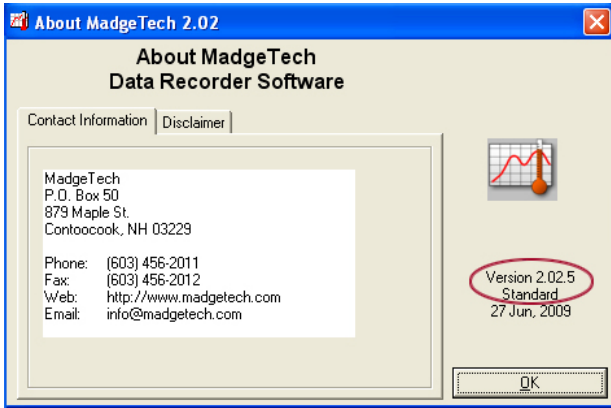
### To determine which USB driver is installed:

1. Right click on 'My Computer' and choose 'Properties'. Click on the 'Hardware' tab and click on the 'Device Manager' button.
2. In the Device Manager Window scroll down the list to 'Universal Serial Bus controllers'. Expand the list and look for 'USB Data Logger Interface' (may also be listed as 'Data Logger Interface').
3. Double click on the USB Logger Interface. This will open the 'USB Logger Interface Properties' dialog window. Click on the 'Driver' tab to find the "Driver Version".



## To identify the Software Version installed:

1. Open the MadgeTech Software
2. On the menu bar, click the 'Help' menu and then on 'About'.
3. On the right hand side of the message box, look at the 'Version'.



MadgeTech, Inc.  
(603) 456-2011 Phone  
(603) 456-2012 Fax  
www.madgetech.com  
support@madgetech.com

6 Warner Road  
Warner, NH 03278

Check compatibility of software and driver versions on compatibility table:

		Driver Version	
		10.24.2004.0	3.2.0.0
Software	2.02.5 or below	Compatible	Not Compatible
	2.03 or higher	Not Compatible	Compatible

## To Update the USB Driver:

1. Go to <http://www.madgetech.com/software-download>
2. Scroll down the page until you see the "Drivers for IFC200, IFC202, IFC300" and click on "Download USB Drivers"
3. When prompted save USB.zip to a location on your hard drive that you can easily access, like a temp directory.
4. Go to the directory where you saved the file and unzip the file (typically you can do this by right clicking on the file and selecting "Extract"). This will create a \USB directory. Go into this directory and double click on the PreInstaller.exe. This will install the drivers.
5. If the old drivers are installed on the computer the install process may detect them and give a message that the old drivers where found and need to be remove. Click yes and the old drivers are uninstalled automatically.
6. If problems persist, please contact MadgeTech.

## To install the latest version of Software

1. Please install the new MadgeTech software from <http://www.madgetech.com/software-download>
2. Scroll down the page until you see the "Choose a Software Option" and click on "MadgeTech 2.03"
3. When prompted save MadgeTech\_2\_03.zip to a location on your hard drive that you can easily access, like in you're my Documents Folder.
4. Go to the directory where you saved the file and unzip the file (typically you can do this by right clicking on the file and selecting "Extract"). This will create a \MadgeTech\_2\_03 directory. Go into this directory and double click on the Setup.exe. Follow the on-screen instructions to install the software.
5. If problems persist, please contact MadgeTech.

MadgeTech, Inc.  
(603) 456-2011 Phone  
(603) 456-2012 Fax  
[www.madgetech.com](http://www.madgetech.com)  
[support@madgetech.com](mailto:support@madgetech.com)

6 Warner Road  
Warner, NH 03278