

## Product Quick Reference Card

### Device Maintenance

#### TransiTemp-EC (Multi Use) Battery Replacement

Materials:

#### Replacement Battery (CR2032)

- Gently pry the two halves of the enclosure apart.
- Remove the circuit board.
- Use a small non-metallic device to push the coin-cell battery out of its holder.
- Hold down the pushbutton in the middle of the circuit board and insert the new battery into the holder.
- Release the pushbutton and watch to verify that the LEDs blink. (If they do not, then you may have inserted the battery upside down. Remove the battery and try again.)
- Replace the circuit board in the enclosure.
- Press the two halves of the enclosure back together.

**Note: The TransiTemp-EC (Single Use) must be returned to the factory for battery replacement.**

#### Battery Warning

**WARNING: FIRE, EXPLOSION, AND SEVERE BURN HAZARD. DO NOT SHORT CIRCUIT, CHARGE, FORCE OVER DISCHARGE, DISASSEMBLE, CRUSH, PENETRATE OR INCINERATE. BATTERY MAY LEAK OR EXPLODE IF HEATED ABOVE 70°C (158°F).**

#### Recalibration

The TransiTemp-EC standard calibration is one point at 25°C.

#### Pricing:

Recalibration traceable to NIST      \$60.00  
Recalibration                                \$40.00

#### Additional:

As Found Data                                \$15.00  
Additional Points                              \$15.00 per point

*To send the devices back, visit [www.madgetech.com](http://www.madgetech.com), select Services then RMA Process.*



Part Number	TransiTemp-EC
Temperature Sensor	Internal semiconductor
Temperature Range	-20 to +70°C
Temperature Resolution	0.1°C
Calibrated Accuracy	±0.5°C (-10 to +40°C) ±1.0°C (-20 to +70°C)
Memory	8,191
Sample Rate	5 seconds up to 30 minutes
Alarm	Yes
LED Indicator	Red & Green
Pushbutton Start	Yes
Required Interface Package	IFC103
Baud Rate	38,400
Typical Battery Life	90 days
Operating Environment	-20 to +70°C, 0 to 90%RH (Non-Condensing)
Material	ABS plastic
Dimensions	1.7" x 2.6" x 0.6" (44mm x 67mm x 16mm)
Single/Multi-Use	Single/Multi-use available
Approvals	CE

*Specifications subject to change.*

*See MadgeTech's terms and conditions at [www.madgetech.com](http://www.madgetech.com)*

#### MadgeTech, Inc.

PO Box 50 • Warner, NH 03278

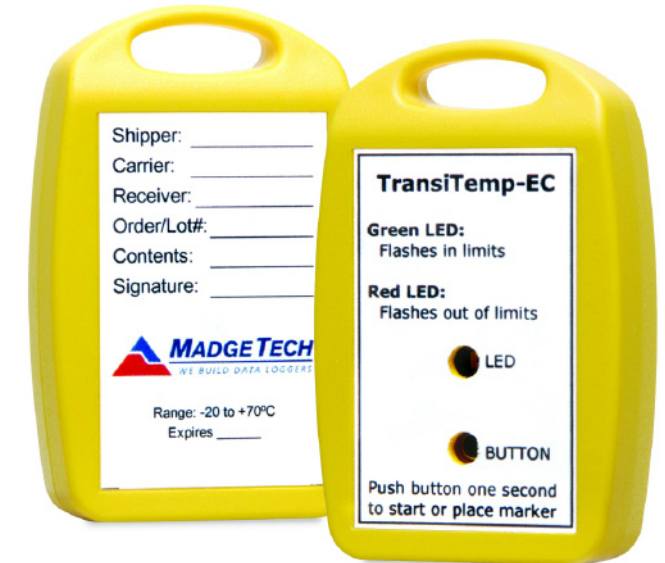
Phone 603.456.2011 • Fax 603.456.2012

[www.madgetech.com](http://www.madgetech.com) • [info@madgetech.com](mailto:info@madgetech.com)

REV A 2008.07.08

## Product Information Card

### TransiTemp-EC



#### TransiTemp-EC

Single or Multi-Use Economy Temperature Recorder



To view the full MadgeTech product line, visit our website at [www.madgetech.com](http://www.madgetech.com).

## Product Notes

### Manual Start

When the **Manual Start** method is selected, the data logger will be armed but not recording. To start the device, hold the push button down until both the green and red LEDs flash momentarily.

### LEDs

Once started, the LED will flash at the selected reading rate to indicate that the device is running. The LED will flash in one second intervals if there is an alarm condition.

### Alarm Settings

To change the settings for the temperature alarm;

- Select **Alarm Settings** from the **Device menu** in the MadgeTech software. A window will appear allowing the customer to set the high and low temperature alarms.
- Press **Change** to edit the values.
- Check **Enable Alarm Settings** to enable the feature. The values can be entered in the field manually or by using the scroll bars.
- Click **Save** to save the changes. To clean an active alarm, press **Clear Alarm**.

## Installation Guide

### Installing the Interface cable

- IFC200, IFC202 or IFC300  
Refer to the "Quick Start Guide" included in the package.
- IFC110, IFC102 or IFC103  
Plug the serial cable into the port and verify it is secure.

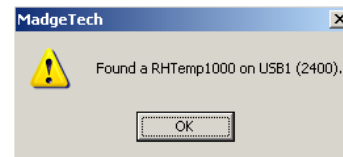
- USB-1 or USB-101  
Install the USB drivers from the CD provided in the kit, then plug the USB cable into the computer and the serial cable into the serial port.

### Installing the software

Insert the Software CD in the CD-ROM Drive. If the autorun does not appear, locate the drive on the computer and double click on **Autorun.exe**. Follow the instructions provided in the Wizard.

### Connecting the data logger

- Once the software is installed and running, plug the interface cable into the data logger.
- Click the **Communication Menu**, then **Auto Configure Port**.
- After a moment, a box similar to the following will appear;



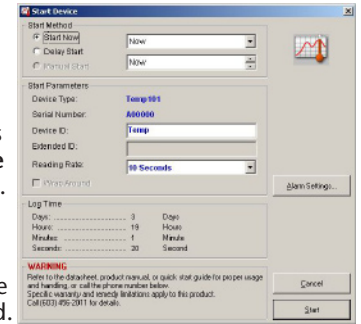
- Click **OK**. The **Device Status** box will appear. Click **OK**.
- At this point, communications have been configured for your logger. These settings can be found under the **Communication Menu**.

**Note:** For additional installation instructions refer to your "Data Logger & Software Operating Manual".

## Device Operation

### Starting the data logger

- Click **Device Menu** then **Start Device**.
- Choose the desired start method.
- Choose the start parameters by selecting a **Reading Rate** suitable for your application.
- Enter in any other desired parameters and click **Start**.
- A box will appear stating the data logger has been started. Click **OK**.



- Disconnect the data logger from the interface cable and place it in the environment to measure.

**Note:** The device will stop recording data when the end of memory is reached or the device is stopped. At this point the device cannot be restarted until it has been re-armed by the computer.

### Downloading data from a data logger

- Connect the data logger to the interface cable.
- Click the **Device Menu** then **Read Device Data**. This will offload all recorded data onto the PC.

## Technical Support

Visit [www.madgetech.com](http://www.madgetech.com), or call (603) 456-2011. Technical support is also available by e-mailing [support@madgetech.com](mailto:support@madgetech.com)

Additional product information is available by e-mailing [info@madgetech.com](mailto:info@madgetech.com).