

Device Maintenance

TransiTemp (Multi Use) Battery Replacement

Materials:

Replacement Battery (CR2032)

- Gently pry the two halves of the enclosure apart.
- Remove the circuit board.
- Use a small non-metallic device to push the coin-cell battery out of its holder.
- Hold down the pushbutton in the middle of the circuit board and insert the new battery into the holder.
- Release the pushbutton and watch to verify that the LED's blink. (If they do not, then you may have inserted the battery upside down. Remove the battery and try again.)
- Replace the circuit board in the enclosure.
- Press the two halves of the enclosure back together.

Note: The TransiTemp (Single Use) must be returned to the factory for battery replacement.

Battery Warning

WARNING: FIRE, EXPLOSION, AND SEVERE BURN HAZARD. DO NOT SHORT CIRCUIT, CHARGE, FORCE OVER DISCHARGE, DISASSEMBLE, CRUSH, PENETRATE OR INCINERATE. BATTERY MAY LEAK OR EXPLODE IF HEATED ABOVE 70°C (158°F).

Recalibration

The TransiTemp standard calibration is one point at 25°C.

Pricing:

Recalibration traceable to NIST \$60.00
 Recalibration \$40.00

Additional:

As Found Data \$15.00
 Additional Points \$15.00 per point

To send the devices back, visit www.madgetech.com, select Services then RMA Process.

Part Number	TransiTemp
Temperature Sensor	Internal semiconductor
Temperature Range	-20 to +70°C
Temperature Resolution	0.1°C
Calibrated Accuracy	±0.5°C (-10 to +40°C) ±1.0°C (-20 to +70°C)
Memory	8,191
Sample Rate	5 seconds up to 30 minutes
Alarm	Yes
LED Indicator	Red & Green
Pushbutton Start	Yes
Required Interface Package	IFC110 or IFC200
Baud Rate	38,400
Typical Battery Life	90 days Typical, 120 days at a 25°C, 5 minute sample rate
Operating Environment	-20 to +70°C, 0 to 90%RH (Non-Condensing)
Material	ABS plastic
Dimensions	1.9" x 3.6" x 0.7" (49mm x 92mm x 18mm)
Single/Multi-Use	Single/Multi-use available
Approvals	CE

Specifications subject to change.

See MadgeTech's terms and conditions at www.madgetech.com

TransiTemp



TransiTemp

Single or Multi-Use Temperature Recorder

MadgeTech, Inc.
 PO Box 50 • Warner, NH 03278
 Phone 603.456.2011 • Fax 603.456.2012
www.madgetech.com • info@madgetech.com

Product Notes

Push Button Start

When the **Push Button Start** method is selected, the data logger will be armed, but not recording. To start the device, hold the push button down until both the green and red LED's flash momentarily.

LEDs

Once started, the LED will flash at the selected reading rate to indicate that the device is running. The LED will flash in one second intervals if there is an alarm condition.

Alarm Settings

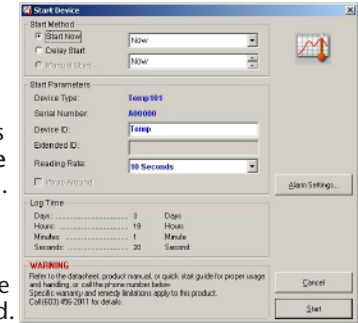
To change the settings for the temperature alarm;

- Select **Alarm Settings** from the **Device menu** in the MadgeTech software. A window will appear allowing the customer to set the high and low temperature alarms.
- Press **Change** to edit the values.
- Check **Enable Alarm Settings** to enable the feature. The values can be entered in the field manually or by using the scroll bars.
- Click **Save** to save the changes. To clean an active alarm, press **Clear Alarm**.

Device Operation

Starting the data logger

- Click **Device Menu** then **Start Device**.
- Choose the desired start method.
- Choose the start parameters by selecting a **Reading Rate** suitable for your application.
- Enter in any other desired parameters and click **Start**.
- A box will appear stating the data logger has been started. Click **OK**.



- Disconnect the data logger from the interface cable and place it in the environment to measure.

Note: *The device will stop recording data when the end of memory is reached or the device is stopped. At this point the device cannot be restarted until it has been re-armed by the computer.*

Downloading data from a data logger

- Connect the data logger to the interface cable.
- Click the **Device Menu** then **Read Device Data**. This will offload all recorded data onto the PC.

Installation Guide

Installing the Interface cable

- IFC200, IFC202 or IFC300
Refer to the "Quick Start Guide" included in the package.
- IFC110, IFC102 or IFC103
Plug the serial cable into the port and verify it is secure.

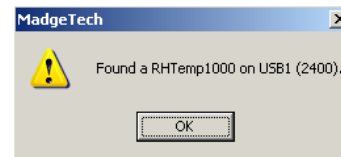
- USB-1 or USB-101
Install the USB drivers from the CD provided in the kit, then plug the USB cable into the computer and the serial cable into the serial port.

Installing the software

Insert the Software CD in the CD-ROM Drive. If the autorun does not appear, locate the drive on the computer and double click on **Autorun.exe**. Follow the instructions provided in the Wizard.

Connecting the data logger

- Once the software is installed and running, plug the interface cable into the data logger.
- Click the **Communication Menu**, then **Auto Configure Port**.
- After a moment, a box similar to the following will appear;



- Click **OK**. The **Device Status** box will appear. Click **OK**.
- At this point, communications have been configured for your logger. These settings can be found under the **Communication Menu**.

Note: *For additional installation instructions refer to your "Data Logger & Software Operating Manual".*

Technical Support

Visit www.madgetech.com, or call (603) 456-2011. Technical support is also available by e-mailing support@madgetech.com

Additional product information is available by e-mailing info@madgetech.com.