

## Product Quick Reference Card



### Device Maintenance

#### Battery Replacement

##### Materials:

Small Needle Nose Pliers  
Replacement Battery (TL-2150)

- Carefully unscrew the sensor end cap and pull the electronics out.
- The battery is the purple cylinder on the circuit board.
- Gently pull out the old battery.
- Insert the new battery one lead at a time, using pliers to fully push the leads into the sockets.

**Note: The battery should be flat against the circuit board, and the positive lead should be closest to the communications jack.**

- Ensure the circuit board is inserted into the white plastic bushing. The sensor cable should not be twisted, or kinked. From the connection to the circuit board, it should run up towards the battery, then down to the sensor.
- Insert the electronics back into the tube and carefully screw the cap on.

#### Battery Warning

**WARNING: FIRE, EXPLOSION, AND SEVERE BURN HAZARD. DO NOT SHORT CIRCUIT, CHARGE, FORCE OVER DISCHARGE, DISASSEMBLE, CRUSH, PENETRATE OR INCINERATE. BATTERY MAY LEAK OR EXPLODE IF HEATED ABOVE 80°C (176°F).**

#### Recalibration

The PRTemp1000IS standard calibration is one point at 25°C. The pressure calibration depends on the range.

Range (PSIA)	0-30	0-100	0-300	0-500	0-1000	0-5000
Range (PSIG)	0-30	0-100	0-300	0-500	-	-
Calibration Point	15PSI and 27-30PSI	15PSI and 90-100PSI	15PSI and 27-30PSI	15PSI and 270-300PSI	15PSI and 450-500PSI	15PSI and 450-500PSI

#### Pricing:

Recalibration traceable to NIST \$90.00  
Recalibration \$70.00

#### Additional:

As Found Data \$15.00  
Additional Points \$15.00 per point

To send the devices back, visit [www.madgetech.com](http://www.madgetech.com), select Services then RMA Process.

Part Number	PRTemp1000IS
Temperature Sensor	Internal semiconductor
Temperature Range	-40 to +80°C
Temperature Resolution	0.1°C
Calibrated Accuracy	±0.5°C
Pressure Range	
Pressure Resolution	*See Table Below
Pressure Accuracy	
Memory	16,383/channel
Sample Rate	2 seconds to 12 hours
Units	PSIA(G), inches, altitude, Torr, mmHg, Pascals
Required Interface Package	IFC110 or IFC200
Baud Rate	2,400
Typical Battery Life	1 year
Operating Environment	-40 to +80°C, 0 to 100%RH
Material	303 stainless steel
Dimensions	6.4" x 1.25" dia. (163mm x 32mm dia.)
Approvals	CE, FM approved

#### \*PRTemp1000IS Range, Accuracy and Resolution

Range (PSI)	0-30	0-100	0-300	0-500	0-1000	0-5000
Accuracy	2% FSR, 0.25% @ 25°C typical					
Resolution (PSI)	0.002	0.005	0.02	0.05	0.05	0.2

Specifications subject to change.

See MadgeTech's terms and conditions at [www.madgetech.com](http://www.madgetech.com)

#### MadgeTech, Inc.

PO Box 50 • Warner, NH 03278  
Phone 603.456.2011 • Fax 603.456.2012  
[www.madgetech.com](http://www.madgetech.com) • [info@madgetech.com](mailto:info@madgetech.com)

## Product Information Card

### PRTemp1000IS



#### PRTemp1000IS

Intrinsicly Safe Pressure and Temperature Recorder



To view the full MadgeTech product line, visit our website at [www.madgetech.com](http://www.madgetech.com).

**Product Notes**

**Pressure Sensor**

To use the pressure sensor for gauge measurements, screw the ¼” male NPT fitting into the pipe to be measured.

**O-Rings**

O-ring maintenance is a key factor when properly caring for the PRTrans1000. The o-rings ensure a tight seal and prevent liquid from entering the inside of the device.

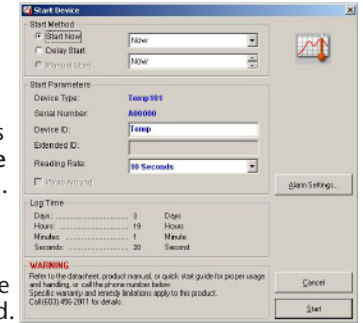
Please refer to the app note “O-Rings 101: Protecting Your Data”, found on the MadgeTech website, for information on how to prevent O-ring failure.

*Note: For more information refer to the PRTemp1000IS Intrinsic Safety user notice.*

**Device Operation**

**Starting the data logger**

- Click **Device Menu** then **Start Device**.
- Choose the desired start method.
- Choose the start parameters by selecting a **Reading Rate** suitable for your application.
- Enter in any other desired parameters and click **Start**.
- A box will appear stating the data logger has been started. Click **OK**.



- Disconnect the data logger from the interface cable and place it in the environment to measure.

*Note: The device will stop recording data when the end of memory is reached or the device is stopped. At this point the device cannot be restarted until it has been re-armed by the computer.*

**Downloading data from a data logger**

- Connect the data logger to the interface cable.
- Click the **Device Menu** then **Read Device Data**. This will offload all recorded data onto the PC.

**Technical Support**

Visit [www.madgetech.com](http://www.madgetech.com), or call (603) 456-2011. Technical support is also available by e-mailing [support@madgetech.com](mailto:support@madgetech.com)

Additional product information is available by e-mailing [info@madgetech.com](mailto:info@madgetech.com).

**Installation Guide**

**Installing the Interface cable**

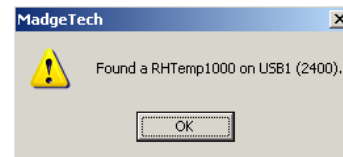
- IFC200, IFC202 or IFC300  
Refer to the “Quick Start Guide” included in the package.
- IFC110, IFC102 or IFC103  
Plug the serial cable into the port and verify it is secure.
- USB-1 or USB-101  
Install the USB drivers from the CD provided in the kit, then plug the USB cable into the computer and the serial cable into the serial port.

**Installing the software**

Insert the Software CD in the CD-ROM Drive. If the autorun does not appear, locate the drive on the computer and double click on **Autorun.exe**. Follow the instructions provided in the Wizard.

**Connecting the data logger**

- Once the software is installed and running, plug the interface cable into the data logger.
- Click the **Communication Menu**, then **Auto Configure Port**.
- After a moment, a box similar to the following will appear;



- Click **OK**. The **Device Status** box will appear. Click **OK**.
- At this point, communications have been configured for your logger. These settings can be found under the **Communication Menu**.

*Note: For additional installation instructions refer to your “Data Logger & Software Operating Manual”.*