

Device Maintenance

Battery Replacement

Materials:
3/32" HEX Driver (Allen Key)
Replacement Battery (U9VL-I)

- Remove the cover from the device by unscrewing the four screws.
- Remove the battery from its compartment and unsnap it from the connector.
- Snap the new battery into the terminals and verify it is secure.
- Replace the cover taking care not to pinch the wires. Screw the enclosure back together securely.

Note: Be sure not to over tighten the screws or strip the threads.

Battery Warning

WARNING: FIRE, EXPLOSION, AND SEVERE BURN HAZARD. DO NOT SHORT CIRCUIT, CHARGE, FORCE OVER DISCHARGE, DISASSEMBLE, CRUSH, PENETRATE OR INCINERATE. BATTERY MAY LEAK OR EXPLODE IF HEATED ABOVE 60°C (140°F).

Recalibration

The PRHTemp2000 standard calibration is one point at 25°C, two points at 25%RH and 75%RH and two points at 14.7 PSI and 30 PSI.

Pricing:

Recalibration traceable to NIST \$120.00
Recalibration \$100.00

Additional:

As Found Data \$15.00
Additional Points \$15.00 per point

To send the devices back, visit www.madgetech.com, select Services then RMA Process.

Part Number	PRHTemp2000
Temperature Sensor	Semiconductor
Temperature Range	-20 to +60°C
Temperature Resolution	0.1°C
Calibrated Accuracy	±0.5°C (0 to 50°C)
Pressure Sensor	Semiconductor (Strain Gauge)
Pressure Range	0 to 30 PSIA
Pressure Resolution	0.002PSIA
Calibrated Accuracy	±1.0%FSR @ 25°C; ±0.2% Typical
Humidity Sensor	Internal Semiconductor
Humidity Range	0 to 95%RH
Humidity Resolution	0.1%RH
Calibrated Accuracy	±3%RH (2%RH @ 25°C Typical)
Memory	87,381/channel
Sample Rate	2 seconds to 24 hours
Required Interface Package	IFC110 or IFC200
Baud Rate	115,200
Typical Battery Life	1 year with display off, 30 days with continuous LCD and no backlight
Operating Environment	-20 to +60°C, 0 to 95%RH (Non-Condensing)
Material	Black anodized aluminum
Dimensions	4.8" x 3.3" x 1.25" (112mm x 84mm x 32mm)
Approvals	CE

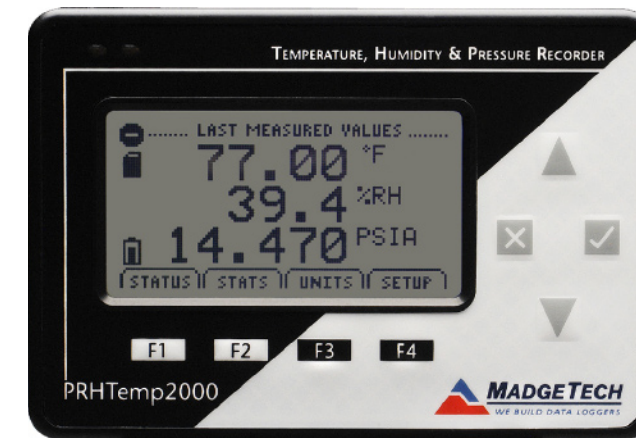
Specifications subject to change.

See MadgeTech's terms and conditions at www.madgetech.com

MadgeTech, Inc.

PO Box 50 • Warner, NH 03278
Phone 603.456.2011 • Fax 603.456.2012
www.madgetech.com • info@madgetech.com

PRHTemp2000



PRHTemp2000

Pressure, Humidity and Temperature Recorder with LCD

Product Notes

Backlight

The backlight uses a significant amount of battery life. Refer to the manual to configure the auto shut-off when not in use.

Password Protection

An optional password may be programmed into the device to restrict access to configuration options.

Note: For additional instructions refer to your "Data Logger & Software Operating Manual".

Installation Guide

Installing the Interface cable

- IFC200, IFC202 or IFC300
Refer to the "Quick Start Guide" included in the package.

- IFC110, IFC102 or IFC103
Plug the serial cable into the port and verify it is secure.

- USB-1 or USB-101
Install the USB drivers from the CD provided in the kit, then plug the USB cable into the computer and the serial cable into the serial port.

Installing the software

Insert the Software CD in the CD-ROM Drive. If the autorun does not appear, locate the drive on the computer and double click on **Autorun.exe**. Follow the instructions provided in the Wizard.

Connecting the data logger

- Once the software is installed and running, plug the interface cable into the data logger.
- Click the **Communication Menu**, then **Auto Configure Port**.
- After a moment, a box similar to the following will appear;



- Click **OK**. The **Device Status** box will appear. Click **OK**.
- At this point, communications have been configured for your logger. These settings can be found under the **Communication Menu**.

Note: For additional installation instructions refer to your "Data Logger & Software Operating Manual".

Device Operation

Starting the data logger

- Click **Device Menu** then **Start Device**.

- Choose the desired start method.

- Choose the desired stop method.

- Choose the start parameters by selecting a **Reading Rate** suitable for the application.

- Enter in any other desired parameters and click **Start**.

- A box will appear stating the data logger has been started. Click **OK**.

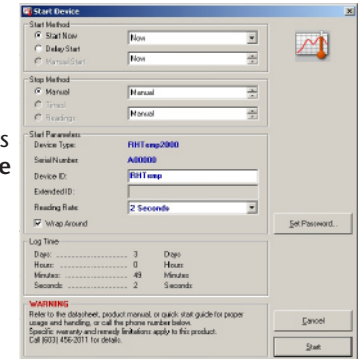
- Disconnect the data logger from the interface cable and place it in the environment to measure.

Note: The device will stop recording data when the end of memory is reached or the device is stopped. At this point the device cannot be restarted until it has been re-armed by the computer.

Downloading data from a data logger

- Connect the data logger to the interface cable.

- Click the **Device Menu** then **Read Device Data**. This will offload all recorded data onto the PC.



Technical Support

Visit www.madgetech.com, or call (603) 456-2011. Technical support is also available by e-mailing support@madgetech.com

Additional product information is available by e-mailing info@madgetech.com.