

Device Maintenance

Battery Replacement

Materials:

Small Phillips Head Screwdriver
Replacement Battery (LTC-7PN)

- Puncture the center of the back label with the screw driver and unscrew the enclosure.
- Remove the battery by pulling it perpendicular to the circuit board.
- Insert the new battery into the terminals and verify it is secure.
- Screw the enclosure back together securely.

Note: Be sure not to over tighten the screws or strip the threads.

Battery Warning

WARNING: FIRE, EXPLOSION, AND SEVERE BURN HAZARD. DO NOT SHORT CIRCUIT, CHARGE, FORCE OVER DISCHARGE, DISASSEMBLE, CRUSH, PENETRATE OR INCINERATE. BATTERY MAY LEAK OR EXPLODE IF HEATED ABOVE 80°C (176°F).

Recalibration

The PRHTemp101 or PRHTemp110 standard calibration is performed at one point at 25°C, two points at 25%RH and 75%RH and two points at 14.7 PSI and 30 PSI

Pricing:

Recalibration traceable to NIST \$120.00
Recalibration \$100.00

Additional:

As Found Data \$15.00
Additional Points \$15.00 per point

To send the devices back, visit www.madgetech.com, select Services then RMA Process.

Part Number	PRHTemp101	PRHTemp110
Temperature Sensor	Internal semiconductor	
Temperature Range	-40 to +80°C	-40 to +80°C
Temperature Resolution	0.1°C	0.1°C
Calibrated Accuracy	±0.5°C	±0.5°C
Pressure Sensor	Semiconductor (strain gauge)	
Pressure Range	0 to 30PSIA	0 to 30PSIA
Pressure Resolution	0.002PSIA	0.002PSIA
Calibrated Accuracy	±1%FSR @ 25°C, ±0.2% typical	
Humidity Sensor	Internal Semiconductor	
Humidity Range	0 to 95%RH	0 to 95%RH
Humidity Resolution	0.5%RH	0.5%RH
Calibrated Accuracy	±3.0%RH	±3.0%RH
Memory	13,107/channel	13,107/channel
Sample Rate	2 seconds up to 12 hours	
LED	Red	Red
Typical Battery Life	1 year	10 years
Required Interface Package	IFC110 or IFC200	
Baud Rate	2,400	57,600
Operating Environment	-40 to +80°C, 0 to 95%RH (non-condensing)	
Material	ABS plastic	ABS plastic
Dimensions	1.7" x 2.3" x 0.9" (44mm x 59mm x 23mm)	
Approvals	CE	CE

Specifications subject to change.

See MadgeTech's terms and conditions at www.madgetech.com

MadgeTech, Inc.

PO Box 50 • Warner, NH 03278

Phone 603.456.2011 • Fax 603.456.2012

www.madgetech.com • info@madgetech.com

PRHTemp101 and PRHTemp110



PRHTemp101

Temperature, Humidity and Pressure Recorder

PRHTemp110

Temperature, Humidity and Pressure Recorder with 10 Year Battery Life

Product Notes

LEDs

Once started, the LED will flash at the selected reading rate to indicate that the device is running.

Installation Guide

Installing the Interface cable

- IFC200, IFC202 or IFC300
Refer to the “Quick Start Guide” included in the package.
- IFC110, IFC102 or IFC103
Plug the serial cable into the port and verify it is secure.
- USB-1 or USB-101
Install the USB drivers from the CD provided in the kit, then plug the USB cable into the computer and the serial cable into the serial port.

Installing the software

Insert the Software CD in the CD-ROM Drive. If the autorun does not appear, locate the drive on the computer and double click on **Autorun.exe**. Follow the instructions provided in the Wizard.

Connecting the data logger

- Once the software is installed and running, plug the interface cable into the data logger.
- Click the **Communication Menu**, then **Auto Configure Port**.
- After a moment, a box similar to the following will appear;



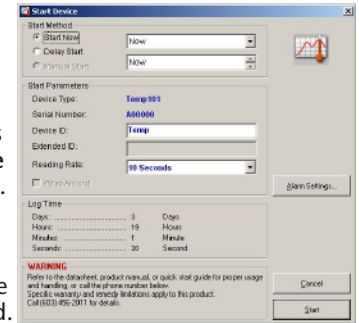
- Click **OK**. The **Device Status** box will appear. Click **OK**.
- At this point, communications have been configured for your logger. These settings can be found under the **Communication Menu**.

Note: For additional installation instructions refer to your “Data Logger & Software Operating Manual”.

Device Operation

Starting the data logger

- Click **Device Menu** then **Start Device**.
- Choose the desired start method.
- Choose the start parameters by selecting a **Reading Rate** suitable for your application.
- Enter in any other desired parameters and click **Start**.
- A box will appear stating the data logger has been started. Click **OK**.



- Disconnect the data logger from the interface cable and place it in the environment to measure.

Note: The device will stop recording data when the end of memory is reached or the device is stopped. At this point the device cannot be restarted until it has been re-armed by the computer.

Downloading data from a data logger

- Connect the data logger to the interface cable.
- Click the **Device Menu** then **Read Device Data**. This will offload all recorded data onto the PC.

Technical Support

Visit www.madgetech.com, or call (603) 456-2011. Technical support is also available by e-mailing support@madgetech.com

Additional product information is available by e-mailing info@madgetech.com.