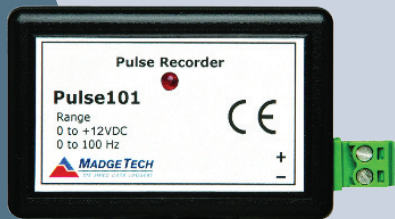


# DATA LOGGING SOLUTIONS

to aid in

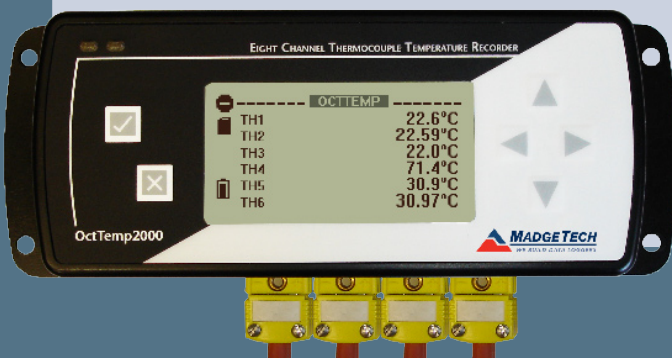
- Well Testing
  - Flow rate measurement and logging
  - Temperature gradient measurement and logging
  - Temperature measurement of bore hole sections
- Wellhead Monitoring
- Absolute, Gauge and Differential Pressure Logging
- High Temperature Logging



**Pulse101**  
Pulse logger  
for flow recording



**PrTC210**  
Pressure and thermocouple  
temperature logger



**OctTemp2000**  
Eight channel  
temperature logger  
with display



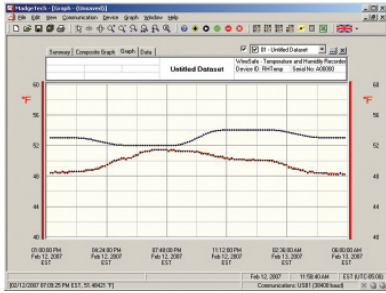
# DATA LOGGING SOLUTIONS

MadgeTech Data Loggers are small, low cost devices for recording environmental parameters. Recorded data is offloaded and analyzed with the simple-to-use Windows®-based MadgeTech software.

Measurable parameters include, but are not limited to, temperature, pressure, water level, bridge & strain, voltage, counts & event, current, and pH. The full line of data loggers offers intrinsically safe models, wireless (RF), and single and multi-channel devices.

Below is a sampling of the MadgeTech product line for the Geothermal Industry. Please ask a salesperson for a solution to your specific application or go online at [www.madgetech.com](http://www.madgetech.com) or email [info@madgetech.com](mailto:info@madgetech.com) for more details.

## MadgeTech Software



One MadgeTech software package maintains the full line of data loggers. This simple, easy-to-use, Windows®-based software effortlessly collects, displays, and analyzes data. A variety of powerful tools allow the user to examine, export, and print professional looking reports with just a click of the mouse.

The software features include:

- Multiple graph overlay
- Data annotation
- Digital calibration
- Offload while logging
- Simple export to MS Excel®
- Full time zone support
- Statistics calculations
- Automatic time synchronization
- Multilingual
- Summary view
- Engineering Units
- Data Table View

## Measure and Record:

### CURRENT



Process110

- 4-20mA, 0-20mA output signals
- Programmable engineering units
- 16 bits of resolution
- 3 ranges:  $\pm 1$  mA,  $\pm 25$  mA, and  $\pm 100$  mA

### LOW LEVEL VOLTAGE



Volt101-100mV

- High accuracy & resolution
- Programmable engineering units
- 4 ranges:  $\pm 100$  mV,  $\pm 2.5$  V,  $\pm 15$  V and  $\pm 30$  V

### PULSE



RFPulse101A

- Programmable engineering units
- Totalizes pulses
- Wireless and stand alone models

### PRESSURE AND THERMOCOUPLE TEMPERATURE



PRTC210

- 0-5000 PSI ranges
- Accepts types J, K, T, E, R, S, B, and N thermocouples
- Internal temperature sensor measures from  $-40$  to  $+80^\circ\text{C}$
- 1/8" NPT
- Compact

### PRESSURE



PR2000

- Onscreen statistics
- LCD pressure graphing
- Battery operated (wall mounted power adapter included)
- 262K memory capacity
- 0-5000 PSI ranges
- 1/4" NPT
- IP65

### PRESSURE & TEMPERATURE



PRTemp1000IS

- 1/4" NPT pressure port
- Intrinsically safe for hazardous environments
- Rugged, IP68 enclosure
- 0-5000 PSI ranges

### WATER LEVEL



Level2000

- Vented to atmosphere
- 0-30' range, 0.02" resolution
- Internal temperature sensor measures from  $-40$  to  $+80^\circ\text{C}$
- User-programmable graph units
- IP68

### BRIDGE/STRAIN



Bridge110

- Interfaces with load cell, torque sensor, or pressure transducer
- Four ranges:  $\pm 10$  mV,  $\pm 25$  mV,  $\pm 100$  mV,  $\pm 1000$  mV
- 2.5V excitation voltage